

WASHBURN & MID-WHARFE CHURCHES MAGAZINE

F E B R U A R Y 2 0 2 2 ~ I S S U E 4 4 8



Washburn & Mid-Wharfe United Benefice

Farnley, Fewston with Blubberhouses,
Leathley, Weston with Denton.

Rector: Revd Stephen McCauley
The Vicarage, Askwith LS21 2HX
Tel: 01943 513340
rector@washburnmidwharfebenefice.org.uk

Hon Assistant Clergy

The Revd Michael Cleverley
Tel: 01943 851234

The Revd Stewart Hartley
Tel: 01943 464106
Email: sr.hartley47@gmail.com

The Revd Barry Miller
Tel: 01943 467641

The Revd Terry Drummond
01943 512298
Email: terry.drummond@hotmail.com

Readers

John Charman, Norwood Hall
Cottage, Norwood LS21 2RA
Tel: 01943 466712

Fran Dale Tel: 01943 463020 email:
fed.curlew@googlemail.com

Peter Wiggins, 32 Manley Road, Ben
Rhydding, Ilkley LS29 8QP
Tel: 01943 609599

Churchwardens

Blubberhouses & Fewston:
Pat Anderson, Tel: 01943 880284

Denton Ann Chadwick
01943 600 604.

Farnley: Peter Goodwin
Tel: 01943 969953

Leathley: Terry Bramall CBE
Tel: 07802 877799
& Liz Webster 01943 468376

Weston: Ann Chadwick
01943 600 604.

Methodist Ministers

Rev Shannon DeLaurel
01943 430345
Shannon.delaurel@methodist.org.uk

Rev Tim Perkins
20 Far Mead Croft, Burley in
Wharfedale. LS29 7RR
01943 864187
Rev.tim.perkins@btinternet.com

Norwood Retreat Centre
Norwood, Otley LS21 2RA,
Tel: 07946 423309
norwoodretreatcentre@gmail.com
Methodist Chapels are in the circuit of
Wharfedale & Aireborough

Websites:

St Oswald's Church, Leathley
www.leathleychurch.org

All Saints Church, Farnley
www.farnleyallsaints.org

Fewston and Blubberhouses
www.fewstonwithblubberhouses.org.uk

Weston Church
www.westonchurch.wordpress.com

Benefice web site
<https://washburnmidwharfebenefice.org.uk>

Norwood Retreat Centre
[www.yorkshirewestmethodist.org.uk/
people-places/norwood-retreat-centre](http://www.yorkshirewestmethodist.org.uk/people-places/norwood-retreat-centre)

Benefice Administrator

Hazel Pullan
Hours Mon, Weds & Fri, 9.30-11.30am
admin@washburnmidwharfebenefice.org.uk
01943 466098

Cover images

Title: The watering can (some readers
may recognise it)
Credit: Anna Bowman



Church Services February and March 2022



All our services will be subject to Government guidelines please check on www.achurchnearyou.com for updates or see the weekly bulletin.

6th February

9.30am. Weston
11am. Farnley
11am. Fewston

Fourth Sunday before Lent

Holy Communion (BCP) (SM)
Morning Worship (SM)
Holy Communion (DW)

13th February

9.30am. Leathley
11am. Blubberhouses
11am. Weston

Third Sunday before Lent

Holy Communion (SM)
Morning Worship (FS)
Morning Worship with Holy baptism (TD)

20th February

9.30am. Weston
9.30am. Farnley
11am. Fewston

Second Sunday before Lent

Mattins (BCP) (TD)
Holy Communion (SH)
Holy Communion (DW)

27th February

9.30am. Leathley
11am. Denton

Sunday next before Lent

Morning Worship (FD)
Holy Communion (SH)

2nd March

7.30pm. Farnley

Ash Wednesday

Holy Communion (SH)

6th March

9.30am. Weston
9.30am. Farnley
11am. Fewston

First Sunday of Lent

Holy Communion (BCP) (SH)
Morning Worship (TD)
Holy Communion (DW)

13th March

9.30am. Leathley
11am. Fewston
11am. Denton

Second Sunday of Lent

Holy Communion (SH)
Holy communion (DW)
Morning Worship (SH)



February Services at Norwood Methodist Chapel

Sunday 13th with Rev. Shannon DeLaureal

Sunday 27th with Rev. Roberta Topham

Email : magazine@washburnwharfemidbenefice.org.uk

The View from the Vicarage

This time next month, my view will be somewhat different. I will have moved to my new Vicarage where the view is less spectacular, no more Cow and Calf for me. Instead, I will be able to see neighbours houses for the first time in what seems ages. From the back of our new house, we can, just, see the golf balls at Menwith Hill, far away in the distance so I will still have a bit of a connection to the Benefice.

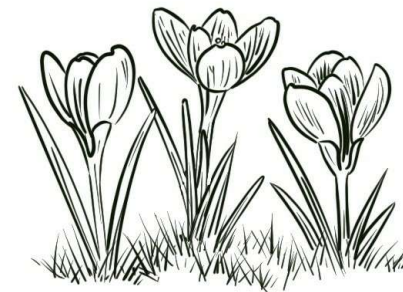
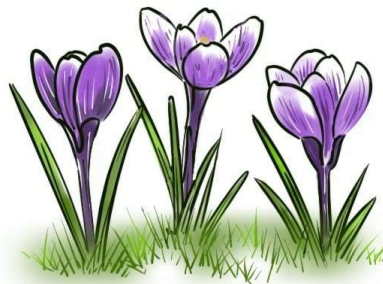
Moving day is fast approaching but meanwhile life continues. Before we know it will be Lent, the Cream Eggs are already in shops, just in time for us to give up chocolate! And all around us our farming neighbours will soon be in full swing with lambing. (If you ever feel that your life is too busy look at a farmer and realise how relaxed your life really is).

And right at the very beginning of this month we celebrate the Feast of Candlemas in our churches. It's an ancient feast; in the medieval church it was the day when all the candles used in a church that year were blessed, hence the name. It is a feast where we celebrate the light of Christ, it really is the last hurrah of Christmas and in some churches the Crib will have remained up until this first weekend of February. So just like at Christmas when life is full of good cheer towards our fellow men and women let's try to share some light and happiness during what can be a dark and miserable month.

So, thank you all for the past two and a half years. It has been the strangest of times but with love and faith we have got through the dark days of lock-downs and are well on the way to working out how we can all live our lives as fully and safely as possible in the years to come.

I leave you with my prayers and blessings and hope you will remember me from time to time in your prayers.

Stephen



Email : magazine@washburnwharfemidbenefice.org.uk

News from Norwood Chapel

Dear Friends,

I want to take a moment to wish Revd Stephen all the best in his move and new post. Your monthly articles entitled "The View from the Vicarage" have been most enjoyable and uplifting. I trust the Washburn and Mid-Wharfe United Benefice will miss your ministry and will hold you in their prayers as you make this move. May God's blessings be with you as you begin again in a new setting.

Over the past several weeks, our Methodist Circuit has been exploring the theme of flourishing . . . flourishing in God's world, personal flourishing and flourishing as God's church. Flourishing means growing and developing in a healthy and vigorous way. Another word for flourish is thrive. In this month of February where the nights are still long (but getting shorter!), the temps are still low, and the pandemic is still with us, I wonder if any of us feel like we're flourishing? Maybe our waistlines are! But what about our spirits? our sense of creativity? our ministries? Have we spent any time since Christmas nourishing our souls, doing something creative with our hobbies, or reaching out to our neighbours with care and thoughtfulness? Or maybe life's practicalities have become quite a burden and because of this, one cannot even think about the notion of flourishing.

Funny enough, scripture reminds us that even in difficult times, with God's help, we can flourish. In preparing for his departure, Jesus encouraged his disciples that they would flourish if they remained in him by obeying his words. And if they remained in him, they would bear much fruit. The image of the vine and branches illustrates how branches must remain connected to the vine in order to bring about sweet, nourishing food. Christ wanted his disciples to flourish when they were going through difficult times and especially when he could no longer be with them. He gave them instructions on how to do this . . . "Love others as I have loved you." Loving others can mean giving practical help, spending time with someone who's lonely, praying for others, being an advocate/mentor for vulnerable people, and etc. Basically, anytime we care about the needs of others, we are loving others as Jesus did.

I don't know about you, but sometimes my own problems get blown out of proportion. They aren't really as big as I think they are. Oftentimes, a new perspective is needed. I receive a new perspective when I think of others and focus on helping them in various ways. When I return to thinking about my "mountain" of a problem, it turns out in the big scheme of things, it's really a "molehill!" I think that when we can do that – see things from a better perspective, we flourish. Now it takes practice; it doesn't come naturally (to me, at least!). Being open to seeing things in a different way allows space for a person to grow and flourish.

I encourage us all to think of ways we would like to flourish . . . in our daily work, leisure, church life and in our faith. May we find ways to remain in Christ, the Vine, so that he can help us bear fruit for the sake of others.

With prayers for flourishing, ~ Rev. Shannon

FEWSTON AND BLUBBERHOUSES CHURCHES

A sincere thank you to everyone who contributed to a celebratory Christmas in our community.

Thanks to clergy and lay clergy who led four special services, thanks to readers, to the Washburn Valley Choir, the choir of St Margaret's, Ilkley, bell ringers and organist – music to uplift all!

Hospitality was enjoyed with mulled wine and refreshments. Thank you to everyone who baked and contributed - dozens of mince pies enjoyed! Thanks to the carol singers and those who welcomed them.

To the talented Christmas tree decorators, creator of wreaths, delightful crafts and seasonal preserves - everyone who offered hospitality to visitors at the Christmas Tree Festival at Blubberhouses, many thanks. There were many 'first time' visitors to St Andrew's. An enjoyable opportunity for neighbours and friends to meet again.

Last but not least, to the children and everyone who participated in Journey to Bethlehem – not forgetting Molly the donkey – and her expert handlers.

A Happy and Healthy New Year to everyone

Fewston and Blubberhouses churches

would like to thank all who contributed so generously to our carol singing efforts.

We raised an amazing £1200.

Thank you for making us feel so welcome when we called and we Wish you A Happy New Year.

Fewston Church



Valentine's Day

Concert

OTLEY BRASS BAND

Saturday, 12 February 2022

2.30 pm

Tickets £10, including light refreshments

Contact: 01943 880284

anderson@delvesridge.plus.com

Cheri 01943 465977, PCC members

Email : magazine@washburnwharfemidbenefice.org.uk

Community Notice Board



Weston Flower and Cleaning Rota

30th January & 6th February - Tom & Ruth Raper

13th & 20th February - Mrs H Pullan

27th February & 6th March - Sally Stanley

Situation Vacant

Parish Clerk to cover

Weston, Askwith, Denton, Middleton, Nesfield with Langbar

Duties to include working with parish councilors, dealing with Harrogate Borough Council and North Yorkshire County Council, organising meetings and agendas, being responsible for financial matters etc. Flexible 4hr per week, pay rate dependent on experience (previous experience not essential). Working from home expenses and lap top provided. 5 month transition period.

For more information contact the Clerk Nick Pullan,

Tel: 07720260401

Email npullanmwpc@gmail.com

Web site: - midwharfedalepc.councilspace.com

Askwith Ladies Social

Following on from the success of the last meeting a request has been made for monthly ASKWITH LADIES SOCIAL.

Venue: Askwith Arms

Date: 8th February 2022

Time: 7pm


If you indicate your intention to come light refreshments have been very kindly offered by Jane and John

Thanks Anne - (Tel: 07713884328 Email: laeatham@gmail.com

Email : magazine@washburnwharfemidbenefice.org.uk

Community Notice Board

Fewston Foxy Ladies

 Meet at 2.30pm at Fewston Parochial Hall 15th February and get ready for Sheila Herbert and Bedpans, Blackboards and Bunions!!

If you want any more info, give Gillian a ring on 01943 880362; Shirley 01423 770281; Mary 01943 464507; Sheila 01943 468741; Joan 01943 466789; Margaret (new number soon!) or Ann on 01423 771393

See you there!,

Fewston Parochial Hall

The Charity teas are on Saturday 26th and Sunday 27th February, from 11am till 4pm.
All proceeds go to dementia U.K.



"Valley Bible Study Group



The Valley Bible Study Group meets on the first and third Wednesdays of the month. The meeting are via Zoom at 2.30pm. Contact Peter Wood for details on peterlwood1951@gmail.com."



T&T



Spring planting with Daphne Wilson on Tuesday 1st February at 2pm. Come and join us, plant up your pot with bulbs and take home your own planter. All materials provided - plus the usual tea and talk of course!

T&T meets at Norwood Social Hall and is for the over 60s. It is only £2 per person. If you want to hear more about T&T, give Gillian a ring on 880362 or Gladys on 880604

We've always got time for T&T!

Marquee for Hire

Hosting a local event or family party outside, need some protection from our British weather?

Hire sizeable marquee (owned by St Andrews Church) with walls and windows - length of two trestle tables, £50 for 48 hours, with £100 deposit on safe return.

Contact Pat on 01943 880284 for booking and collection.

Email : magazine@washburnwharfemidbenefice.org.uk

BLUBBERHOUSES CHURCH

QUEENS PLATINUM JUBILEE



FLOWER FESTIVAL

2 June to 6 June 2022

Friends of Blubberhouses -

Let's join the National Celebrations!



Email : magazine@washburnwharfemidbenefice.org.uk

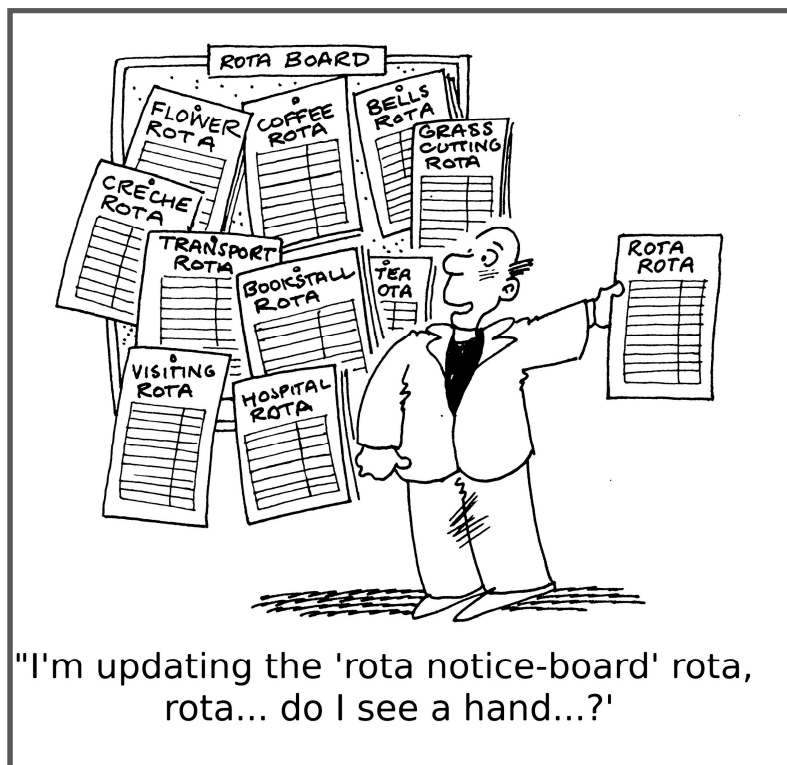
We are a friendly group of women who meet up monthly at 7.30 on the second Wednesday of the month at Leathley Village Hall. we welcome members from Otley, Huby, Pool and of course Leathley and Farnley.

As I write this we are looking forward to our Christmas/New Year celebration with a three course meal at the Milk Bar in Otley. In addition at our regular monthly meeting in January we will be having a very useful session on basic CPR and the use of a defibrillator.

Looking forward to February, on 9th, Marian Wilby, Land Management Team Leader will be giving a talk on

Nidderdale Natural Area of Outstanding Natural Beauty entitled "The Jewel on our Doorstep". This should encourage our small walking group to get out there for a brisk early spring walk to admire the beauty first hand.

If you are interested in joining our group we have a full programme of activities for 2022. Please ring our President Susan Kerridge on 07716 024650 or email susankerridge@btinternet.com. Or you can just turn up on the day and we will give you a warm welcome and can promise home made cakes at every meeting!



YOUR LOCAL VILLAGE HALL NEEDS YOU



NORWOOD SOCIAL HALL
IS LOOKING FOR NEW COMMITTEE
MEMBERS IF YOU ARE INTERESTED IN
GETTING INVOLVED
PLEASE CONTACT HAZEL 07891 254 233
HELEN 07977 450 375



Farnley Estate Young Farmers Club

Reporter Emma Goulding.



We'd like to wish everyone a happy new year from Farnley Estate Young Farmers and hope that everyone had a great Christmas. We've been very busy over the Christmas period but we're looking forward to 2022!

Two teams from our club competed in the district frisbee competition on 13th December, at Knaresborough Football Club. They did very well with Farnley A coming 1st and Farnley B coming 2nd. Well done to everyone who took part and thank you to those who organised it. Good luck to those competing in the county round on 23rd January.

On 15th December it was our Christmas meal at Albivio's in Harrogate. This was a great night with 60 of us there! The food was delicious so thank you to Albivio's for giving us such a good night.



We went carol singing on 22nd December to raise money for club funds and the Stroke Association. Well done to everyone who went to help raise money for these important causes and thank you to everyone who donated and listened to our tuneful singing! Particularly thank you to Adam and Katie Ryder for hosting us at the end of the evening and providing us with refreshments. We raised £310 overall so well done everyone.



Email : magazine@washburnwharfemidbenefice.org.uk



to answer a variety of questions from music to agriculture to catchphrase. Well done to "The Old Crusties" who won!

On 9th January some of our members and parents went round the local area collecting Christmas trees to raise money for club funds and the Stroke Association. Thank you very much to James Driffield who organised 170 trees for us to collect and well done to everyone who helped to collect them.

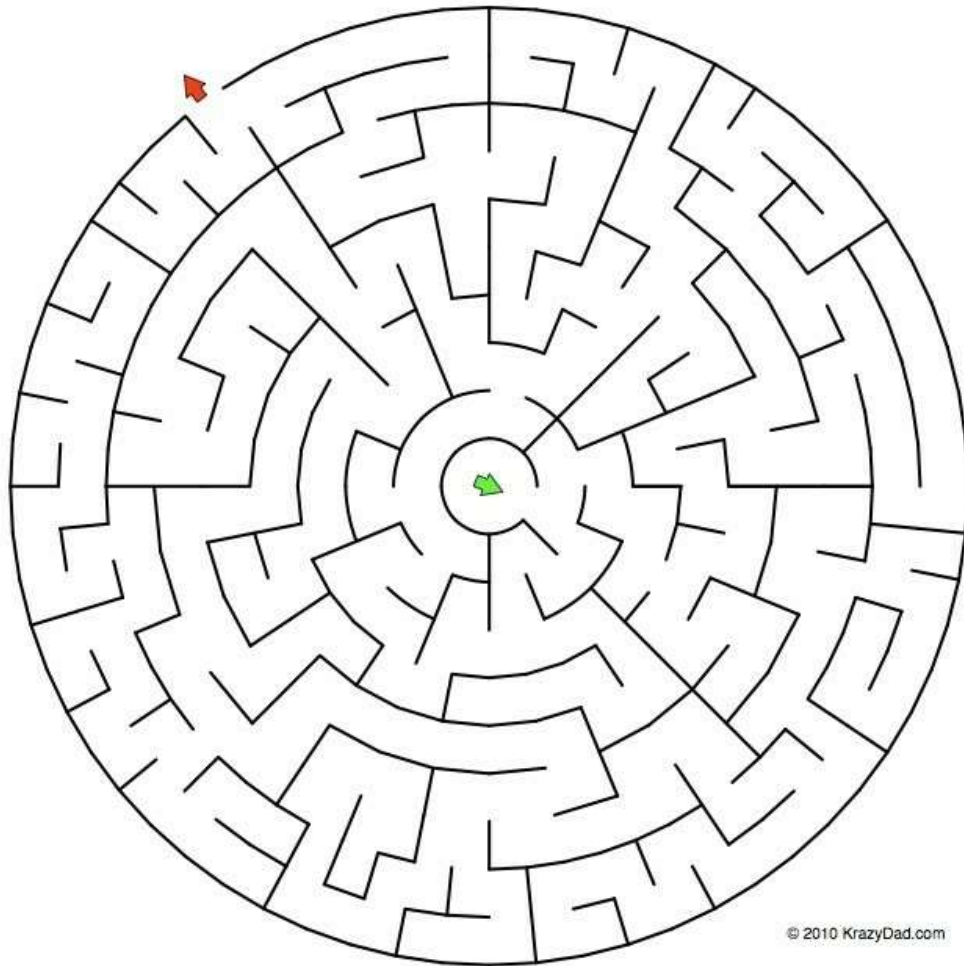
The club started the year with a club leader quiz on 5th January. Thank you to the club leaders for organising this at short notice, due to the district new year's social being cancelled. We had

As always if you are aged 10-28 and you would like to join please call our secretary Ana Bunton on 07783 836081. You don't have to be a farmer! Thank you.

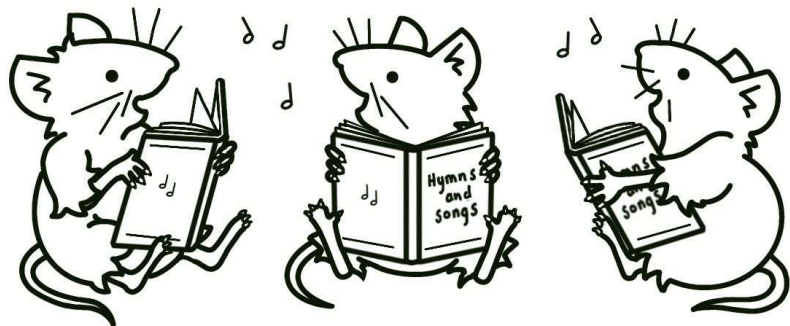


Email : magazine@washburnwharfemidbenefice.org.uk

Maze, Story, Puzzles and colouring-in



© 2010 KrazyDad.com

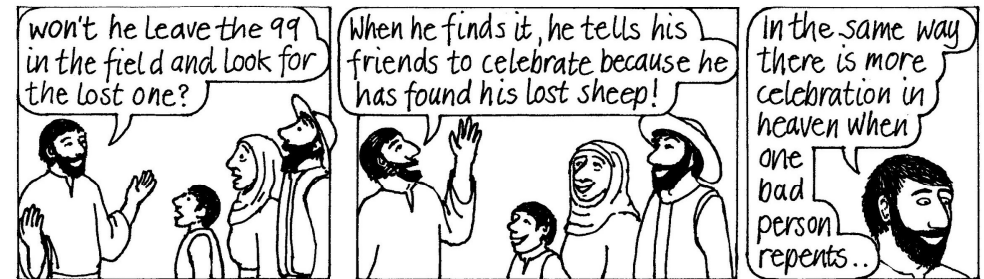
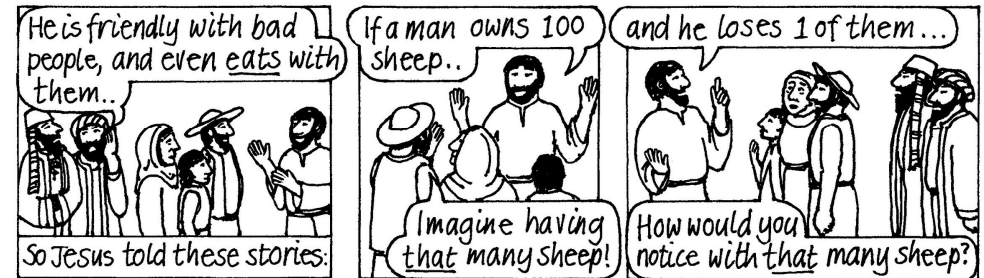


Bible Bite

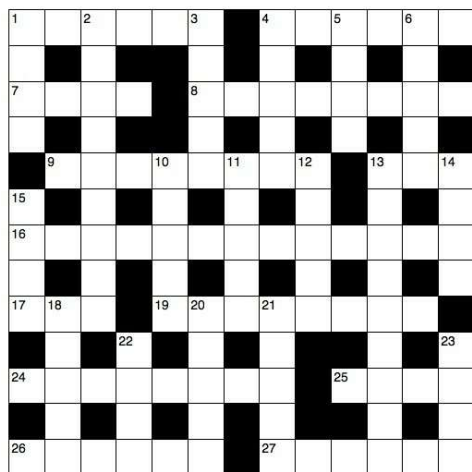
A short story from the Bible

It can be read in the Bible in
Luke chapter 15 verses 11-32

Jesus spent his time teaching everyone who would listen, whatever they were. The Pharisees and Law teachers watched Jesus.



Crossword Puzzle



Down

1 'Before the — crows, you will disown me three times' (Matthew 26:75) (4)

2 Relating to the books of the Bible between Acts and Revelation (9)

3 'They have — the Lord out of the tomb, and we don't know where they have put him!' (John 20:2) (5)

4 Belief (5)

5 'Take the following fine spices: ... 250 shekels of fragrant —' (Exodus 30:23) (4)

6 'Do not — Jerusalem, but wait for the gift' (Acts 1:4) (5)

10 A seer (anagram.) (5)

11 'Even there your hand will — me' (Psalm 139:10) (5)

12 The wild variety was part of John the Baptist's diet (Mark 1:6) (5)

13 A non-Greek speaker who was looked down on by civilized people (Colossians 3:11) (9)

14 Famous 1950s musical whose characters included members of

16 Across, — and Dolls (4)

15 The province from which Paul wrote to the Corinthians (1 Corinthians 16:19) (4)

18 'He was standing in the gateway with a linen cord and a measuring — — his hand' (Ezekiel 40:3) (3,2)

20 'Today, if you hear his —, do not harden your hearts as you did in the rebellion' (Hebrews 3:15) (5)

21 The Jericho prostitute who hid two Israelite spies on the roof of her house (Hebrews 11:31) (5)

22 'And now these three remain: faith, — and love. But the greatest of these is love' (1 Corinthians 13:13) (4)

23 'God has numbered the days of your reign and brought it to an end' (Daniel 5:26) (4)

Across

1 'If you love those who love you, what — is that to you?' (Luke 6:32) (6)

4 'They threw the ship's — overboard' (Acts 27:19) (6)

7 The first murderer (Genesis 4:8) (4)

8 He was the head Levite in charge of the singing when the ark of God was brought back to Jerusalem (1 Chronicles 15:22) (8)

9 Samson was noted for this (Judges 16:6) (8)

13 Solicit money or food from passers by (Acts 3:2) (3)

16 What William Booth's Christian Mission became in 1878 (9,4)

17 Alliance of Religions and Conservation (1,1,1)

19 'I will praise your name for ever and ever. — — I will praise you' (Psalm 145:1-2) (5,3)

24 Simon had (anagram.) (8)

25 Desperate (Deuteronomy 28:48) (4)

26 Elisha witnessed the boy he was seeking to resuscitate do this seven times before opening his eyes (2 Kings 4:35) (6)

27 The belly and thighs of the statue in Nebuchadnezzar's dream were made of this (Daniel 2:32) (6)

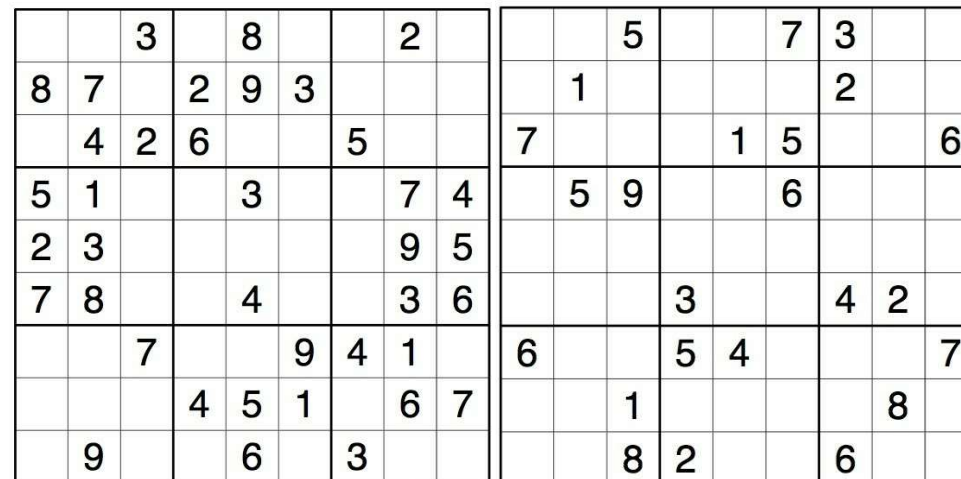
Valentines Day Word Search



Valentine
Rose
Romance
Love
Present
Restaurant
Hearts
Kiss
hug
girlfriend
boyfriend
fiancé
worship
repentance
angels
baby
temple
Mary
Candlemas
presentation



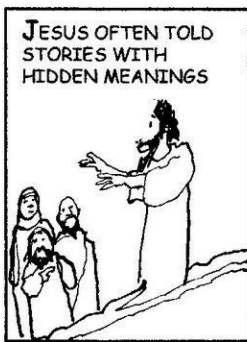
Sudoku



© 2008 KrazyDad.com

© 2008 KrazyDad.com

The tale of the Lost Sheep



JESUS OFTEN TOLD STORIES WITH HIDDEN MEANINGS



ONE STORY WAS ALL ABOUT A GOOD SHEPHERD.



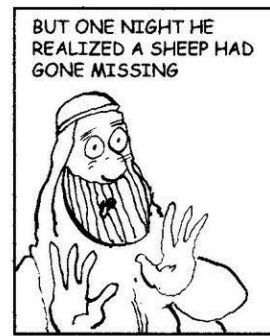
WHO TOOK GREAT CARE OF ALL HIS SHEEP



THE SHEPHERD WOULD ALWAYS MAKE SURE EACH SHEEP WAS SAFE.



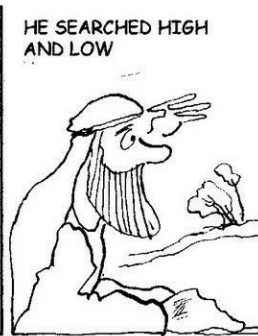
HE WOULD COUNT THEM AT THE END OF EVERY DAY



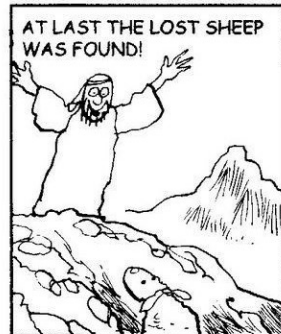
BUT ONE NIGHT HE REALIZED A SHEEP HAD GONE MISSING



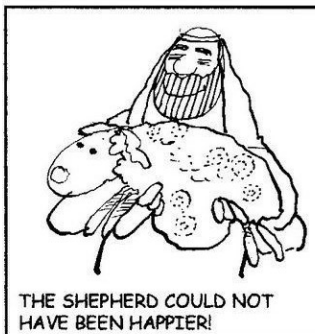
THE SHEPHERD SET OUT TO SEARCH FOR THE LOST SHEEP



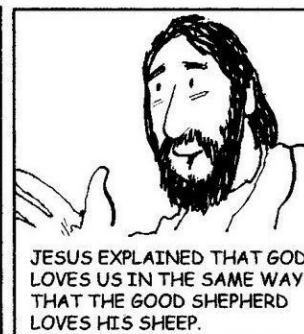
HE SEARCHED HIGH AND LOW



AT LAST THE LOST SHEEP WAS FOUND!

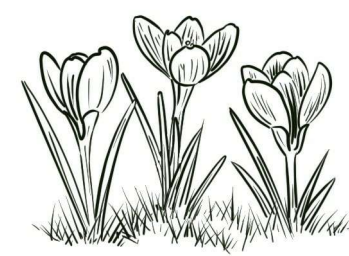
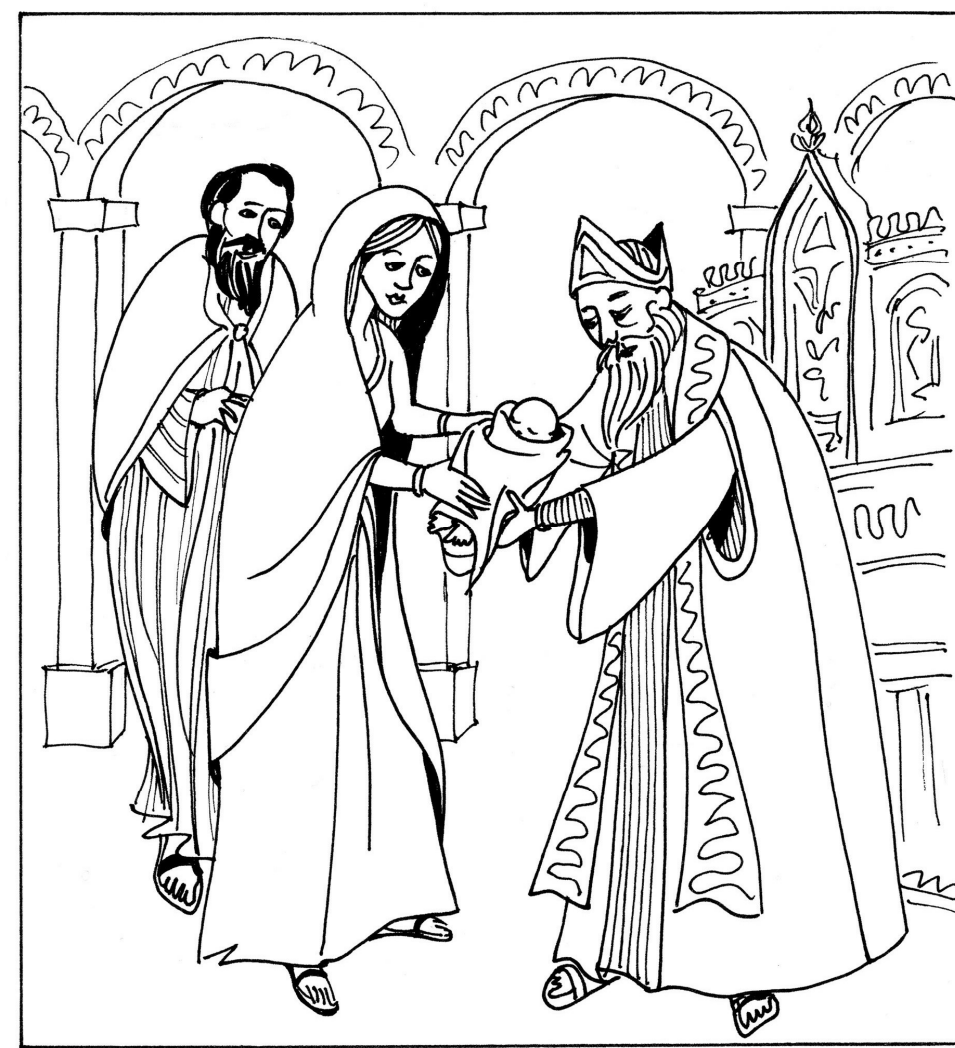


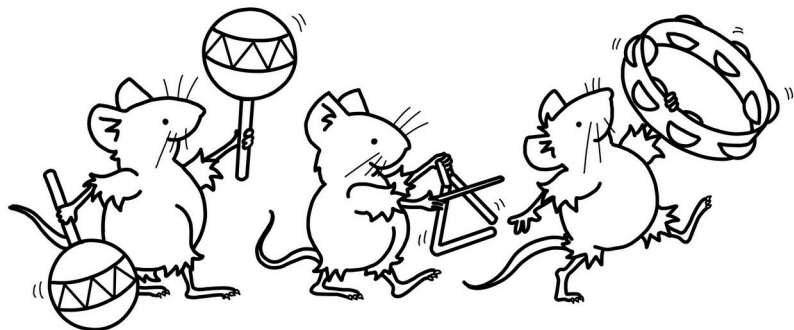
THE SHEPHERD COULD NOT HAVE BEEN HAPPIER!



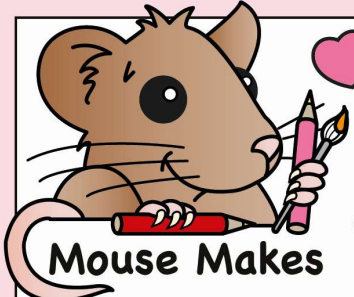
JESUS EXPLAINED THAT GOD LOVES US IN THE SAME WAY THAT THE GOOD SHEPHERD LOVES HIS SHEEP.

Christening of the Baby Jesus





Email : magazine@washburnwharfemidbenefice.org.uk



Mouse Makes

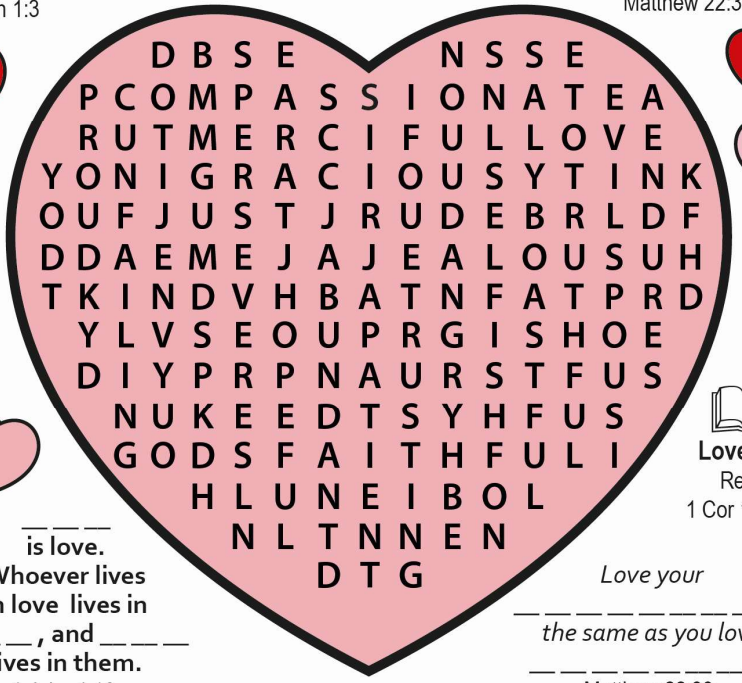
Lord, you are a God who shows
_____ and is _____
...You have great _____ and _____
Psalm 86:1

See what great love the Father
has for us that He would call us His
1 John 1:3

How did
God show
He **loved** us?
Read 1 John 4:9

Love the Lord your
God with all your
_____ with all your
_____ and with all your
_____ Matthew 22:37

Love is ..
Read
1 Cor 13:4-7



D	B	S	E											N	S	S	E
P	C	O	M	P	A	S	S	I	O	N	A	T	E	A			
R	U	T	M	E	R	C	I	F	U	L	L	O	V	E			
Y	O	N	I	G	R	A	C	I	O	U	S	Y	T	I	N	K	
O	U	F	J	U	S	T	J	R	U	D	E	B	R	L	D	F	
D	D	A	E	M	E	J	A	J	E	A	L	O	U	S	U	H	
T	K	I	N	D	V	H	B	A	T	N	F	A	T	P	R	D	
Y	L	V	S	E	O	U	P	R	G	I	S	H	O	E			
D	I	Y	P	R	P	N	A	U	R	S	T	F	U	S			
N	U	K	E	E	D	T	S	Y	H	F	U	S					
G	O	D	S	F	A	I	T	H	F	U	L	I					
			H	L	U	N	E	I	B	O	L						
			N	L	T	N	N	E	N								
			D	T	G												

_____ is love.
Whoever lives
in love lives in
_____, and _____
lives in them.
1 John 4:16

Love your
_____ the same as you love
Matthew 22:39

Love is:
PATIENT • KIND • GRACIOUS • JUST • TRUTHFUL • TRUSTING • HOPEFUL
PERSEVERE • ENDURES • GOD

Love is not:
JEALOUS • ENVY • BOASTFUL • PROUD • SELFISH • ANGRY • RUDE • EVIL

God's love is:
LOVE • MERCIFUL • FAITHFUL • UNFAILING • ABUNDANT • COMPASSIONATE

Email : magazine@washburnwharfemidbenefice.org.uk

All in the month of February

It was:

175 years ago, on 11th February 1847 that Thomas Edison, American inventor and businessman was born. Best known for inventing the first practical incandescent light bulb, phonograph, movie camera and projector, and many more.

Also 100 years ago, on 28th February 1922 that Egypt gained its independence from the UK.

90 years ago, on 27th February 1932 that British physicist James Chadwick announced his discovery of the neutron subatomic particle in the journal Nature. He was awarded the 1935 Nobel Prize for Physics for his discovery.

80 years ago, on 8th February 1942 that the Battle of Singapore took place. The Japanese then occupied Singapore until September 1945. This is regarded as the worst disaster in British military history, with about 80,000 British, Indian and Australian troops captured.

75 years ago, on 7th February 1947 that the first of the Dead Sea Scrolls were found in caves in Khirbat Qumran (now in the West Bank, Palestine).

70 years ago, on 6th February 1952 that Princess Elizabeth ascended the throne following the death of her father, King George VI. She was in Kenya at the time and became the first Sovereign in over 200 years to accede while abroad.

65 years ago, on 16th February 1957 that the Toddlers' Truce was abolished in Britain. During the Truce, television admissions closed down for an hour so that young children could be put to bed. Children's programming ended at 6pm and adult programming began at 7pm.

60 years ago, on 20th February 1962 that John Glenn became the first American astronaut to orbit the Earth. He made three orbits in the space capsule *Friendship 7*.

50 years ago, on 9th February 1972 that the British Government declared a state of emergency over the miners' strike which began in January. From 16th February, electricity supplies to homes and businesses were cut off for up to nine hours a day. The strike ended on 25th February.

Also 50 years ago, on 18th February 1972 that the House of Commons voted narrowly in favour (by eight votes) of joining the Common Market (now the European Union).

25 years ago, on 13th February 1997 that an inquest into the death of black British teenager Stephen Lawrence ended. The jury decided that he had been unlawfully killed by five white youths, but they were not convicted. The case was one of the highest-profile racial killings in British history. Two of the perpetrators were eventually convicted in January 2012, and sentenced to 15 years and 14 years in prison.

Also 25 years ago, on 22nd February 1997 that scientists at the Roslin Institute in Edinburgh announced that they had successfully cloned a mammal for the first time: a sheep named Dolly.

20 years ago, on 4th February 2002 that Cancer Research UK was founded. It is the world's largest independent cancer research and awareness charity.

Also 20 years ago, on 19th February 2002 that NASA's Mars Odyssey space probe began mapping the surface of Mars using a variety of imaging systems. It later discovered huge reservoirs of underground ice.

10 years ago, on 11th February 2012 that Whitney Houston, one of the bestselling music artists of all time, died. She drowned in her hotel bathtub because of coronary artery disease and drug intoxication, aged 48.

Email : magazine@washburnwharfemidbenefice.org.uk



Are you looking to try something new in 2022?

How about visiting your local WI to meet new people, get involved in a range of fun activities and make a difference in your community? Think you're too young for the WI ladies? Well think again!

Did you know that our youngest member across the country is a catering student who joined her local WI following her 18th Birthday. The days of middle aged, older women and housewives that bake cakes and make jam are far behind us. In 2022 join us to experience things like Paddleboarding, take part in great dales walks, listen to interesting guest speakers, learn new skills and so much more...

The WI is everything you want it to be

For some, it's a chance to meet people and catch up with friends. For others, it's a way to learn valuable life skills and make a difference in their communities through WI campaigns. A WI membership offers you the opportunity to meet women in your local area, to make friends and experience new things. Whatever your reason for joining, we offer all kinds of opportunities to all kinds of women. WIs come in all shapes and sizes and our members can be involved in the way that suits them.

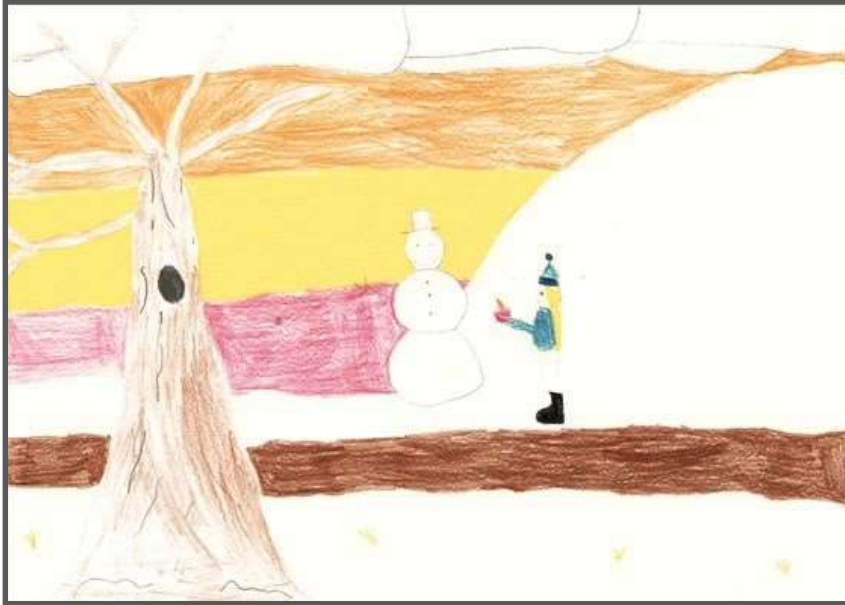
Darley's Angels are a fun & outgoing bunch. We meet in Darley, North Yorkshire at Christ Church Community Centre on the 3rd Thursday of the month.

Email us for details darleysangelswi@gmail.com or visit our Facebook page www.facebook.com/darleysangelswi

Instagram: @daleysangelswi

Twitter: @DarleysAngelsWI,
[#onevoiceuseit](https://www.instagram.com/onevoiceuseit)

Email : magazine@washburnwharfemidbenefice.org.uk



These are the last two of the lovely drawings by the pupils of year 5-6 of Askwith Primary School with the theme, Winter



Do you have a few hours to spare at the Weekend?

Why not join our Friendly Team of Volunteers who run the Tea Room at the Heritage Centre?

You will Meet lovely people and get to sample delicious cake, whilst helping a good Cause!

**Give Jenny a ring on
01943 880794**



Washburn Heritage Centre

www.washburnvalley.org

Follow us on Twitter and Facebook



The programme Law Makers & Law Breakers came to a close at the end of January and what a great programme it was. Members and friends were entertained with a variety of walks, talks and suppers, and enjoyed the fascinating exhibition on display at the Heritage Centre.

We are pleased to announce that our new programme **Our Natural Health Service** kicks off with a Preview for Members only on Tuesday 1 February 2022. This spring programme looks at how our beautiful natural environment and our own resourcefulness can be put to service to improve our health. Talks describe the lessons learned from years past and more recently, and also explore the benefits of engaging with the natural world. Walks just to enjoy plus some with specialist leaders. As always, sociable Washburn suppers to lift the spirits with light-hearted health messages too. Workshops to stimulate mind and muscle for all ages and abilities. Start to safeguard your future health and have fun too with Our Natural Health Service programme.

Events in February:

TALK – In Search of the Moment – Wednesday 9 February 7.30pm

The Flat Capped Photographer, Tom Marsh MA, leader of Yorkshire

Photo Walks will share his particular view of photography and the benefits of the countryside on his own mental health in an illustrated talk. (There is an opportunity to participate in a photo walk on Saturday 12 March as well.) Refreshments will be served. Cost £8 member and £10 non-member.

SUPPER & MUSIC – Valentine's Day – Monday 14 February 7-10pm

They say romance and laughter are good for our wellbeing so join us for a Valentine's supper when great food and live singing by Jean Sinclair will ease us into the mood for love and laughter. Cash bar. £31 non-member and £25 member.

WALK – Reservoir Ramble – Thursday 24 February 9.30am

On this circular walk around the beautiful Thruscross Reservoir, we will learn something about the flooding of the valley and the creation and history of the Washburn reservoirs. A steep climb or two, park at the Yorkshire Water car park at Thruscross for a scenic six miles before returning to the Centre where a delicious two course lunch will be served. Cost £15 non-member and £12 member.



Email : magazine@washburnwharfemidbenefice.org.uk

Our **Tea Room** is open Sundays only during winter from **11am to 4pm** until the end of March 2022. Please drop in and sample our new menu with homemade food, using local suppliers and of course our legendary cakes, all prepared and served by our team of enthusiastic volunteers.

ADVANCE NOTICE:

Gentle Exercise with Jenny Wilson Starting Tuesday 1 March for six weeks 1.45-2.45pm

When Jenny is not wearing her Administrator's hat for working the Centre, she can be found instruct-

ing exercise to seniors of all abilities. A qualified fitness instructor with specialist knowledge of ageing and exercise, as well as falls prevention, Jenny will guide you on how to improve your range of movement and maintain good mobility, working on balance, posture and strength. The class is part chair-based and set to music, with a lot of fun and laughter in the hour! Well-earned refreshments served afterwards. Cost per class £7.50 non-member and £6 member. Book for the full six weeks and get one class free £37.50 non-member and £30 member. Places are limited so book early to avoid disappointment.



Title: Our Natural Health Service-programme leaflet front cover

Credit: Viv Whiteley

Email : magazine@washburnwharfemidbenefice.org.uk

The British Trust for Ornithology has recently published various articles describing their work with Blackcaps, specifically those which are increasingly choosing to winter in the UK. Then, for Christmas I was given a copy of Mike Toms' excellent book "A Garden Bird Year" in which he writes about the same topic. And what happened next? The first appearance this year of Blackcaps in my garden – initially two females or juveniles with their brown caps, and then a male with his jet black cap. He's still around – and is likely to go pop soon, having spent hours each day hammering away at the suet balls.

The Blackcap is a somewhat stocky warbler slightly smaller than a Chaffinch, with a brownish grey back, males being dusky-grey below, with females and immatures a warmer buff-grey. Then there is the brown or black crown that gives them their name.

They have long been summer visitors and breeders, departing to the Mediterranean for the winter, but over the last decade or so they have been recorded more and more wintering here. Tagging such small birds is difficult as they must be recaptured to allow the tags to be read, but ringing has shown that all bar a handful of the birds which winter in the UK are from central Europe: birds which have also traditionally headed south for the winter.

Why you might ask, would they change their habits? After all, migration patterns are genetically inscribed, and a change would need a significant impetus. It seems likely to be a

combination of climate change – warmer winters in the UK – and our enthusiasm for bird feeding. Why fly a thousand plus miles when you can travel half that distance and be handsomely fed to boot?

BTO Garden Bird Watch observations from nearly 4,000 gardens were used in a study which showed that wintering Blackcaps are only regularly seen in gardens where supplementary food is put out, especially when it is high in fat, such as suet balls and sunflower hearts. Give it a go! You never know your luck.

Measurements on birds caught for ringing have shown that Blackcaps wintering in Britain have relatively narrower and longer beaks than those wintering in Spain, suggesting that they have adapted to a more generalist diet. Research has also shown that this new migration strategy has become genetically encoded by reproductive isolation – that is, birds wintering in Britain get back more quickly and mate with other birds that do the same. Being fitter after the shorter journey, they also fledge more chicks.



What of the future? Over time, changing environmental conditions may threaten the viability of traditional wintering areas in southern Spain, as well as making the migratory passage to the south more difficult. Any new opportunities further north will thus become even more important. Winters are also warming in their usual breeding areas in and around Germany: all that might be needed to keep them "at home" could be increased supplementary feeding in Germany, where at the moment, bird feeding is far less common.

Could our summer breeding Blackcaps decide to stay here? Migration is a perilous process. Only time will tell, but almost all our migratory birds are

under pressures of some sort due to climate change so we must expect to see more of this type of behavioural shift.

If you find the lives of our garden birds to be of interest, and would like to join in and count the feathered occupants of your garden, please contact me or visit the BTO Garden BirdWatch website - www.bto.org/gbw

Mike Gray
gbwmike@gmail.com

Photograph credit: Mike Dawson
Titles: Black cap (below)
Photograph credit: BTO/Mike Gray
Titles: Black cap in the garden (left)



Poetry Request

Hooty Owl

A feathered coat of snowy white
He is the angel of the night
His eyes are keen, he sees it all
He sits in trees and makes his call.

Small creatures please beware
For Hooty Owl is everywhere
Silently he flies from tree to tree
Forever looking for his prey to see.

The moon was out, the stars were bright
When Hooty finally caught a sight
of a little mouse running through the grass
Hooty swooped and made a pass.

He missed the mouse and hit the

ground
His eyesight for once had let him down
So Hooty realised he needed specs
and made an appointment for some checks

His appointment done he got a pair
of spectacles with anti-glare
Hooty now was in his glory
So now is the time to end this story!

Thank you to from "Robert", and Miss
V Dunn, Leathley for sending in the
poem

Photograph Credit: Tom Raper
Title: Barn Owl in Weston Church yard



Email : magazine@washburnwharfemidbenefice.org.uk



Gardeners Corner



After such a mild December and January it is hard to know what the weather holds in store for us over the coming months. However, there are some jobs to do! Early February is a good time to trim those hedges, well before the birds start nesting, otherwise you will have to wait until July.. Fe as in February is also fe as in iron - a reminder to perk up your ericaceous plants and buddleias with a little sequestered iron.

The unseasonal weather has brought the camellias into flower early. The danger is that a frost will spoil the blooms so if a frost is likely it's a good idea to cover the shrub with fleece to prevent any damage and save those gorgeous flowers.

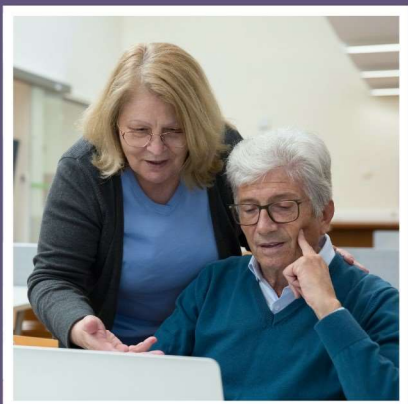
It is still the tree planting season, so as long as the ground is not frozen or waterlogged you can get those trees and shrubs in. Just make sure the ground is well prepared – a square hole is best, to encourage the roots to explore outwards.

Snowdrops are also aptly known as "Fair Maids of February". Once they have started to die down, clumps can be dug up and divided.

Finally don't forget to start chitting those seed potatoes, ready for planting out at Easter! I usually stand mine in egg boxes in a light frost free position – a cool conservatory is ideal.



Email : magazine@washburnwharfemidbenefice.org.uk



Free support to get you online

- Want to learn how to use your new device or get the internet set up?
- Would you like to email friends and family and make free calls over the internet?
- Would you like to look up a wide range of information quickly and easily?
- Would you like to shop online and save money?



Get in touch with our Digital Champion Volunteers!
Whether you're a complete beginner or if you want to brush up on your current skills, Digital Champions offer free and friendly support.

Know someone who could use some digital support?

Get in touch by emailing: jo@nidderdaleplus.org.uk or calling 07710 660799

www.citizensonline.org.uk

Free Digital Support Helpline: 0800 196 5883

Nidderdale Plus is a registered charity: No.1163998

Email : magazine@washburnmidwharfebenefice.org.uk

WASHBURN & MID-WHARFE CHURCHES MAGAZINE

Feeling inspired?

The magazine is created by compiling contributions from readers, the many people associated with running the churches, societies, clubs and event holders. Thank you to everyone for sending in items each month.

If you feel inspired please send in your own poem or request share your favourite poem, a seasonal recipe, write an articles or or anything you wish to share. All items for the magazine are always welcome. Please email your items to:

magazine@washburnmidwharfebenefice.org.uk

Or send in by post to;
C/O The Heritage Centre Office
Washburn Heritage Centre
Fewston Church
Harrogate
HG3 1SU

How to Subscribe

The magazine costs £6 a year to have 12 copies of the magazine delivered by hand or £14 to have it posted directly.

Please contact Paul Howarth Tel: 01943 465076 if you would like to arrange delivery and payments

Advertising

We encourage business that are happy to provide a service in our rural parishes to advertise with us.

Please contact Ann Johnson by email ann@apmj.co.uk or Tel: 01943 880000 to discuss your advert and our reasonable yearly prices

Magazine Archive

To see past issues we have an online archive. Thank you to Paul (one of three Pauls who help create and deliver the magazine) for editing the website www.fewstonwithblubberhouses.org.uk/church-life/parish-magazine/.

Our magazine

The magazine was created to link the communities of the Anglican and Methodist churches in the Mid-Wharfe and lower Washburn Valley. The Anglican churches of the United Benefice are All Saints Weston, St Helen Denton, St Michael and St Laurence Fewston, St Andrew Blubberhouses, All Saints Farnley and St Oswald Leathley. Norwood chapel is in the Wharfedale & Aireborough Methodist circuit

Contact information for all is on page 2.

The magazine is managed by our Treasurer Ann Johnson, Distributors Cheri Beaumont and Paul Howarth, our Rector Stephen McCaulay and the Editor Anna Bowman.

Email : magazine@washburnmidwharfebenefice.org.uk

Answers to the January Magazine puzzles

3	9	2	7	6	8	1	5	4
1	5	7	2	4	9	3	8	6
4	6	8	3	5	1	9	2	7
2	7	9	1	8	4	5	6	3
5	1	3	6	9	7	2	4	8
8	4	6	5	2	3	7	9	1
7	8	4	9	1	2	6	3	5
9	3	5	4	7	6	8	1	2
6	2	1	8	3	5	4	7	9

9	4	2	6	8	5	3	7	1
6	1	7	4	9	3	5	8	2
3	8	5	2	1	7	9	4	6
4	7	1	8	5	2	6	3	9
8	5	3	9	6	4	2	1	7
2	6	9	3	7	1	4	5	8
1	9	6	5	4	8	7	2	3
7	3	4	1	2	6	8	9	5
5	2	8	7	3	9	1	6	4

A	S	W	F	U	A	A
B	O	T	O	M	L	E
D	R	N	O	C	A	H
I	C	E	D	E	C	A
E	A	R	K	A	N	
L	I	M	B	O	S	E
O	U	R	Y			
C	R	I	M	S	O	N
R	N	E	A	A	E	
A	B	H	O	R	R	E
V	O	E	D	I	L	E
A	L	P	H	A	A	N
T	E	D	O	N	Y	T

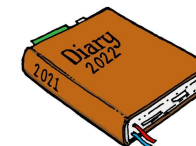
j	x	m	y	u	f	o	w	h	a	g	u
j	e	s	u	s	c	r	e	a	m	e	d
z	g	b	t	r	o	w	i	n	g	e	t
e	h	l	o	r	d	m	h	g	p	f	t
j	o	j	w	a	o	y	e	p	h	a	t
l	s	x	a	j	a	n	i	o	o	t	r
n	t	o	r	w	a	h	g	b	n	h	u
w	i	n	d	i	s	c	i	p	l	e	s
r	o	a	s	r	i	w	a	t	e	r	t
s	e	m	o	u	n	t	a	i	n	m	i
h	m	w	a	l	k	i	n	g	o	d	n
p	e	t	e	r	m	o	r	n	i	n	g



Email : magazine@washburnwharfedebenefice.org.uk

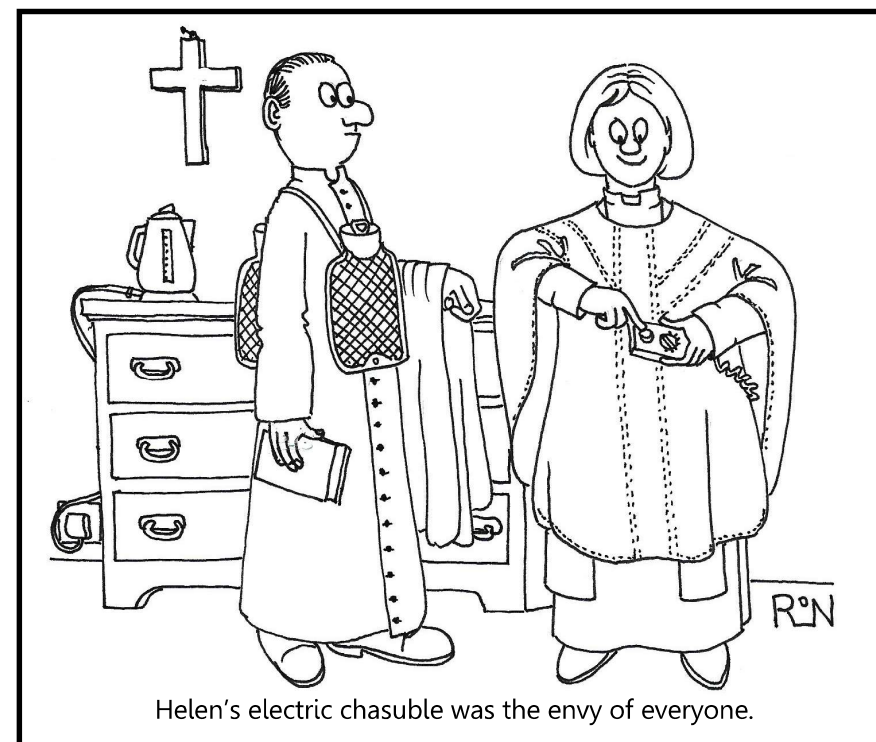
Date for your Diary

Please see the Community and Benefice Notice Board on pages 6 - 12 for events and notices this month, and pages 28-29 for the Washburn Heritage Centre



Shrove Tuesday - 1st March 2022 (Happy Pancake Day)

Puzzles and colouring in pull out section in the centre



Next Contribution Deadline: 10th February 2022

2022 Deadlines;
10th March, 8th April 10th May, 9th June

Edited by Anna Bowman

Email; magazine@washburnmidwharfedebenefice.org.uk

For more information about the magazine and how you can contribute subscribe or advertise please see page 34

Email : magazine@washburnwharfedebenefice.org.uk