



Please see the Community Notice Board and notices on pages 7- 10 and 24 for events, notices and future dates for your diary.

- For the Washburn Heritage Centre see page 34
- For Farnley Estate WI see page 37

### Puzzles and colouring in the centre pages



Next Contribution Deadline: 9<sup>th</sup> August

2024 Deadlines;  
9<sup>th</sup> September, 10<sup>th</sup> October, 9<sup>th</sup> November

Edited by Anna Bowman

Email; [magazine@washburnmidwharfebenefice.org.uk](mailto:magazine@washburnmidwharfebenefice.org.uk)

For more information about the magazine and how you can contribute subscribe or advertise please see page 38

Email : [magazine@washburnwharfebenefice.org.uk](mailto:magazine@washburnwharfebenefice.org.uk)

# Washburn & Mid-Wharfe Churches Magazine

A u g u s t 2 0 2 4 ~ I s s u e 4 7 8



50p

## Washburn & Mid-Wharfe United Benefice

Farnley, Fewston with Blubberhouses,  
Leathley and Weston with Denton.

### Priest-in-Charge

Revd Teresa McLaughlin

Tel: 01943 818113

Email: [Rev.McLaughlinT@outlook.com](mailto:Rev.McLaughlinT@outlook.com)

### Honorary Assistant Clergy

The Revd Stewart Hartley

Tel: 01943 464106

Email: [sr.hartley47@gmail.com](mailto:sr.hartley47@gmail.com)

The Revd Barry Miller

Tel: 01943 467641

The Revd Terry Drummond

01943 512208 Email:

[terry.drummond@hotmail.com](mailto:terry.drummond@hotmail.com)

### Licensed Lay Ministers

John Charman, - Tel: 01943 466712

Fran Dale Tel: 01943 463020 email:

[fed.curlew@googlemail.com](mailto:fed.curlew@googlemail.com)

Paul McLaughlin

Email [pmc1617@gmail.com](mailto:pmc1617@gmail.com)

### Churchwardens

Blubberhouses & Fewston:

Pat Anderson, Tel: 01943 880284

Denton

Ann Chadwick

01943 600 604.

Farnley:

Peter Goodwin

Tel: 01943 969953

Leathley:

Terry Bramall CBE

Tel: 07802 877799

& Liz Webster 01943 468376

Weston: Ann Chadwick

01943 600 604.

## Methodist Ministers

Rev Shannon DeLaurel

01943 430345

[Shannon.delaurel@methodist.org.uk](mailto:Shannon.delaurel@methodist.org.uk)

Rev Tim Perkins

01943 864187

[Rev.tim.perkins@btinternet.com](mailto:Rev.tim.perkins@btinternet.com)

Norwood Retreat Centre

Norwood, Otley LS21 2RA,

Tel: 0748 415 4032

[norwoodretreatcentre@gmail.com](mailto:norwoodretreatcentre@gmail.com)

Methodist Chapels are in the circuit of  
Wharfedale & Aireborough

### Websites:

Saint Oswald's Church, Leathley

[www.leathleychurch.org](http://www.leathleychurch.org)

All Saints Church, Farnley

[www.farnleyallsaints.org](http://www.farnleyallsaints.org)

Fewston with Blubberhouses

[www.fewstonwithblubberhouses.org.uk](http://www.fewstonwithblubberhouses.org.uk)

All Saints Church Weston

[www.westonchurch.wordpress.com](http://www.westonchurch.wordpress.com)

Benefice web site

<https://washburnmidwharfebenefice.org.uk>

Norwood Retreat Centre

[www.yorkshirewestmethodist.org.uk/](http://www.yorkshirewestmethodist.org.uk/)

[people-places/norwood-retreat-centre](http://people-places/norwood-retreat-centre)

### Benefice Administrator

Anna Bowman

[admin@washburnmidwharfebenefice.org.uk](mailto:admin@washburnmidwharfebenefice.org.uk)

Telephone: 07523 798338

please note the role is part time so I will reply to  
your email or return telephone calls as soon as I  
am able too. Usual work afternoon - Wednesday

### Front cover

Cover image: The Peace Tree dove  
(See page 5)

Credit: Rev. Shannon

Email : [magazine@washburnwharfebenefice.org.uk](mailto:magazine@washburnwharfebenefice.org.uk)

## Answers to the July Magazine puzzles

3	6	2	4	8	1	9	7	5
9	1	7	5	3	2	4	6	8
5	4	8	9	7	6	1	3	2
1	9	6	2	4	7	5	8	3
8	7	3	1	6	5	2	9	4
2	5	4	8	9	3	6	1	7
6	8	9	3	2	4	7	5	1
4	3	5	7	1	9	8	2	6
7	2	1	6	5	8	3	4	9

6	2	8	1	4	5	3	9	7
4	5	3	8	7	9	6	2	1
7	9	1	2	6	3	4	5	8
5	3	9	7	2	1	8	4	6
8	4	2	3	9	6	7	1	5
1	7	6	4	5	8	2	3	9
2	6	4	9	1	7	5	8	3
3	1	7	5	8	4	9	6	2
9	8	5	6	3	2	1	7	4

	S	A	B	B	A	T	I	C	A	L	
C		L		R		N		L		B	
O	P	I	N	I	O	N		L	A	I	N
L		N		M		U		T		L	E
O	L	G	A		G	A	L	I	L	E	A
S					D		L		M		N
S	A	R	D	I	S		S	E	V	E	R
I		O		A		E		D			S
A	D	U	L	T	E	R	Y		F	L	E
N		L		R		R		L		E	R
S	W	A	Z	I		A	C	E	T	A	T
		D		B		T		V		R	T
	R	E	V	E	L	A	T	I	O	N	

p	p	g	i	a	n	t	s	f	c	t	c
c	e	g	y	p	t	z	b	k	a	r	a
g	o	d	c	m	i	d	c	c	l	u	r
v	p	u	a	w	b	a	e	q	e	s	e
b	l	r	n	c	t	b	n	s	b	t	p
o	e	e	a	t	h	e	b	r	e	w	o
r	g	f	a	b	r	a	h	a	m	r	r
d	t	r	n	d	d	y	s	l	l	w	t
e	z	u	l	o	e	t	y	e	a	i	y
r	b	i	g	g	e	r	z	o	d	n	d
t	h	t	n	h	j	o	s	h	u	a	d
c	o	m	p	l	a	i	n	o	r	t	h



### The printer

This magazine is printed by Sharon  
Press

[sharonpressuk@googlemail.com](mailto:sharonpressuk@googlemail.com)

Email : [magazine@washburnwharfebenefice.org.uk](mailto:magazine@washburnwharfebenefice.org.uk)

## Washburn & Mid-Wharfe Churches Magazine

### Feeling inspired?

The magazine is created by compiling contributions from readers, the many people associated with running the churches, societies, clubs and event holders. Thank you to everyone for sending in items each month.

If you feel inspired to write an article for the magazine. Share some news, a poem or a seasonal recipe, please send them to the editor.

Email your items to:  
[magazine@washburnmidwharfebenefice.org.uk](mailto:magazine@washburnmidwharfebenefice.org.uk)

Or send by post to;  
C/O The Heritage Centre Office  
Washburn Heritage Centre  
Fewston Church  
Harrogate  
HG3 1SU

### Advertising

We encourage business that are happy to provide a service in our rural parishes to advertise with us.

Please contact Ann Johnson by email [ann@apmj.co.uk](mailto:ann@apmj.co.uk) or Tel: 01943 880000 to discuss your advert

Our Prices are £80 for a half page or £40 for a quarter page, per annum (12 issues).

**We are also happy to discuss single adverts for events.**

### Magazine Archive

To see past issues we have an online archive. Thank you to Paul (one of three Pauls who help create and deliver the magazine) for editing the website  
[www.fewstonwithblubberhouses.org.uk/church-life/parish-magazine/](http://www.fewstonwithblubberhouses.org.uk/church-life/parish-magazine/)

### Our magazine

The magazine was created to link the communities of the Anglican and Methodist churches in the Mid-Wharfe and lower Washburn Valley. The Anglican churches of the United Benefice are All Saints Weston, St Helen Denton, St Michael and St Laurence Fewston, St Andrew Blubberhouses, All Saints Farnley and St Oswald Leathley. Norwood chapel is in the Wharfedale & Aireborough Methodist circuit

Please find contact information on page 2.

The magazine is managed by our Treasurer Ann Johnson, Distributors who include Cheri Beaumont and the Editor Anna Bowman.

### How to Subscribe

The magazine costs £6 a year to have 12 copies of the magazine delivered by hand or £14 to have it posted directly.

Please contact the Editor if you would like to arrange delivery and payments

Email : [magazine@washburnmidwharfebenefice.org.uk](mailto:magazine@washburnmidwharfebenefice.org.uk)



## Village Church Services August



Please check on [www.achurchnearyou.com](http://www.achurchnearyou.com) for up to date information.

### 4<sup>th</sup> August

9.30am	Weston	Holy Communion (Book of Common Prayer) (TMc)
11am	Fewston	Holy Communion (TMc)
9.30am	Leathley	Family Service (PMc)

### 11<sup>th</sup> August

11am	Denton	Holy Communion (TMc)
11am	Fewston	Morning Prayer (PMc)
9.30am	Farnley	Family Service (TD)

### 18<sup>th</sup> August

3pm	Weston	Evensong with Quattuor (JC)
11.00am	Blubberhouses	"Creativity" Service (FS) *
9.30am	Leathley	Holy Communion (TMc)

### 25<sup>th</sup> August

9.30 am	Farnley	Holy Communion (TMc)
11am	Denton	Family Service (FD)
3pm	Fewston	Evening Prayer (TMc)

See page 8 for the Nidd Art Trail information



## Services at Norwood Methodist Chapel August

Sunday 11<sup>th</sup> August at 2:30pm - with Rev Cameron Stirk  
Chapel Anniversary Holy Communion

Sunday 25<sup>th</sup> August at 2:30pm - with Rev Michael Faulkner

Email : [magazine@washburnmidwharfebenefice.org.uk](mailto:magazine@washburnmidwharfebenefice.org.uk)



# The Vicar's Monthly Message

## Family

There has been so much coverage recently about the Royal Family and their health concerns. First His Majesty and then the Princess of Wales, both suffering with Cancer. Then recently Princess Anne has been in hospital after an accident. I wonder if you read about the comment that has been made, suggesting that we are more interested in our royal family than in our own families.

It got me thinking; how true is that statement? If we do follow the royal family, then because we are not related to them in any way (unless you have been keeping a big secret!), that means that we do not have to be too involved, and can take more of a passive role. We can simply observe and not be too emotionally involved. There is the old statement that we can't choose our relatives but we can choose our friends. Unlike our own families, which can either leave us feeling really positive or dare I say it, perhaps experiencing the odd negative feeling. Hopefully though, the latter is not the case and we do take an interest in the life of our families. Being there for one another, to share in celebrations, and to support when times are hard. Summer is often a good time for us to catch up and spend time with them.

As Christians there is of course another family unit, the all important Christian family, our brothers and sisters in Christ. Supporting one another through prayer and encouragement. Paul and I were moved by all the kind wishes we received when we came down with Covid. "Family" support was so important, it made a big difference to us. Experiencing the joy of our faith in Jesus, and wanting to take an active interest in one another. Wanting to share our faith with those we meet; wanting them to experience all the good things that God wants them to experience in their lives, such as being accepted for who they truly are.

We of course, as Christians, are all Royalists; we are called to be loyal subjects of his Divine Majesty, the one who is King of kings; the one who even our own King bends his knee to.

Blessings Teresa

## From the Registers

### Burial of Ashes

6<sup>th</sup> July George Barry Gregory at Saint Oswald's Leathley

Email : magazine@washburnwharfemidbenefice.org.uk

At our June meeting we listened to Katie Burnett from Courtyard Planters, a thriving business in Westgate, Otley which was started in 2005. She was a very engaging speaker explaining to us how, with no experience in horticulture, she decided to set up a business selling planters. She and her husband operate their business in an environmentally friendly way, for example without using pesticides and selling peat free compost in customer's own sacks. They also grow flowers to make bunches. The photo shows Katie with some colourful flowers she brought to the meeting to sell along with potted plants.

of the month at Leathley Village Hall at 7.30pm (unless otherwise stated). In addition on the 4th Wednesday of the month our walking group ventures out for walks locally with either a coffee or picnic stop. In August, tying in with our talk from Horticap, we will be doing a circular walk around the Horticap area and finishing off with a coffee and cake at the cafe there.

If you would like to come to any of the events above or want to know more about our WI please contact Diane Hanline our President by email to [farnleyestatewi@gmail.com](mailto:farnleyestatewi@gmail.com)

On August 14th we will be hearing from Horticap, a charity located near Harlow Carr, providing training in horticulture and other skills for those with learning difficulties. In April the charity celebrated its 40th anniversary and as part of this had a garden display at this year's Great Yorkshire Show. The following month author Kath Padget will recount tales of her time as a teacher in the Yorkshire classrooms of the 1970's.

To view our programme for 2024 please visit <https://yorkshire-north-west.thewi.org.uk/find-wi/farnley-estate>. All our meetings take place on the second Wednesday



Email : magazine@washburnwharfemidbenefice.org.uk





### Open Gardens photos

Wharfedale WI committee members who helped with Tea and Cake at Askwith Village Hall on Saturday (Andrea, Helen, Hazel, Sue, Vicki) page 35 bottom

Wharfedale WI members Pam Parrington and Andrea Ainley (President) ready to sell garden entry tickets. Page 35 middle

Some of the members of the Weston and Denton church community that helped at Askwith Village Hall on Sunday (Pam, Jenny, Rachel and Hilda) above



**Titles:** Peace Tree (left)  
**Photograph credit:** Rev Shannon (see page 5)

Email : [magazine@washburnwharfedalebenefice.org.uk](mailto:magazine@washburnwharfedalebenefice.org.uk)

## News from Norwood Chapel

Dear Friends,

We all know that the world is quite unsettled, with wars and conflicts in Ukraine and in Gaza and in other places that are near and dear to our hearts. However, it does seem that the unsettledness continues to grow . . . with the political violence that has recently occurred in the US as the presidential election in November gets closer and with the UK's General Election. I have learned that politicians are experiencing increased harassment in their roles. What is happening to our world? Why is humanity becoming more intolerant, extreme and violent? This is not ok! What can the Church do to help? What would God want us to do? How can we promote the peace that our world so desperately needs? These are questions that we all need to ponder and answer ourselves, personally and collectively.

Recently, one of my churches chose to host a stall at the annual village Gala. They decided that praying for peace could unite folks. (I must confess we weren't trying to address the questions above.) So doves were made! All sorts of doves . . . knitted (large and small), felted, greeting cards, and also delicious biscuits. Two branch trees were created so that paper doves could be hung on them. Prayers for peace could be written on each paper dove. People of all ages were willing to do this! And we soon learned that folks were more willing to write a message if we didn't ask them to write a "prayer." I think that intimidated some while others were not necessarily people of faith. The following morning all the doves hanging on the trees were blessed in the worship service. Their messages and prayers were entrusted into God's keeping.

In the late 18<sup>th</sup> century John Wesley acknowledged that there was diversity in thought within the people called Methodists. Nonetheless, wasn't it still possible for the people called Methodists "to love alike" even if they didn't think alike? John Wesley believed that it could be so and that we all could be united. I would like to prove him right! And that starts with you and me. How can we promote peace, justice, understanding and a willingness to learn from each other? Perhaps the first step is in prayer. Please pray for God's peace everywhere and anywhere you believe it's needed. May God help us to be part of the answer to our own prayers and to infuse peace into every heart.

**Titles:** Peace Tree - see page 36  
Dove of Peace - Front cover

**Photograph credit:** Rev. Shannon

May God's peace be with you,  
~ Rev. Shannon



Email : [magazine@washburnwharfedalebenefice.org.uk](mailto:magazine@washburnwharfedalebenefice.org.uk)



# Community Notice Board



Fewston Foxy Ladies

Find out about Modern Slavery.  
Come along to our meeting on  
Tuesday 20th August 7.30pm at  
Fewston Parochial Hall! Everyone is  
always welcome at  
Fewston Foxy Ladies!

If you want any more info, give  
Gillian a ring on 01943 880362;  
Sue 07812 071636; Sheila 01943  
468741; Joan 01943 466789; or  
Margaret 01423 806151

See you there!



T&T



Next meeting

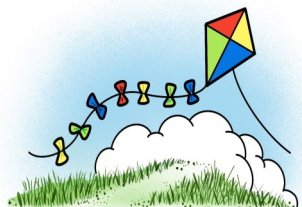
Next meeting Tuesday 3rd September  
at 2pm! See you then- at Norwood  
Social Hall

We normally meets at Norwood Social Hall  
for anyone over 60.

It is only £2 per person.

If you want to hear more about T&T, give  
Gillian a ring on 880362

I have always got time for T&T!



## Open Gardens 2024 at Weston, Askwith and Denton

A huge thank you to everyone who  
helped make the Open Gardens event  
at the end of June such an enormous  
success. Despite the proposed road  
closure, subsequently postponed, and  
inclement weather throughout June,  
several hundred visitors  
came to view our beautiful  
villages and gardens. In the  
end we were lucky with the  
weather. Special thanks to  
our wonderful gardeners  
who had worked so hard to  
ensure that everything  
looked stunning for the  
weekend. Teas were served  
at the Village Hall and at a  
Denton garden, thanks to  
the hard work of the WI and  
all the volunteers who

baked, welcomed visitors, washed up  
and generally helped. The weekend  
raised £3,800 for our two churches  
which is an excellent result. It would  
not have happened without you, so  
well done all!



In need of new  
home

## Yamaha Grand Piano

Free to a passion-  
ate instrument lover

Please contact the edi-  
tor (details page 38)  
who will pass on emails  
to the owner



"How thoughtful, wearing something  
all the wedding guests could shelter  
under in case of rain."

Email : [magazine@washburnwharfemidbenefice.org.uk](mailto:magazine@washburnwharfemidbenefice.org.uk)

Email : [magazine@washburnwharfemidbenefice.org.uk](mailto:magazine@washburnwharfemidbenefice.org.uk)





## Gardeners Corner



Still plenty to do in the garden this month. Hopefully you have been harvesting crops from the veg plot, making sure to pick those courgettes when young, before they turn into prize marrows. Remember to cut back the foliage from tomato plants in the greenhouse to help ripening. Herbs can be trimmed to encourage new growth and perennials such as nepeta, catmint, can be cut back after flowering which will also tidy up the borders. Remember to water camellias and rhododendrons to help the buds to set for next year – they will be happy to have an ericaceous feed too.

Now that the birds should all have finished nesting it is time to complete all that hedge trimming that you

didn't quite manage to do last month. Continue deadheading annuals to prolong the flowering period until the first frosts. Once the lavender flowers have gone over, the plants can be trimmed back to about 1 inch below the flowered stems, but don't be too heavy handed as lavender won't regenerate from old brown wood. Having added lots of material to the compost heap over the summer, it is a good idea to turn it to speed up the process.

Gardening has been such a challenge this year with all the slugs and snails, but all the rain has encouraged lots of growth too, so there should be plenty of colour. Enjoy your August garden and all that nature has to offer!



## Recipe ~ Tomato Chutney



This Recipe is reproduced from the All Saints Weston Recipe book, that was first printed 1<sup>st</sup> December 1956. 52 years later it was discovered by Reverend Marlene Wilkinson in her mothers possessions and reprinted again. She dedicated it to "Edith and all the other saints who made their Contributions"

67 years later we are sharing the recipes again but this time in the magazine. Thank you to the people of Weston for their recipes

### Ingredients

3 lbs green tomatoes  
1 large cooking apple  
3 onions  
1 pint vinegar  
1/2 lb raisins  
1 lb Demerara Sugar  
1 tablespoon salt  
1 teaspoon ginger  
1 teaspoon pepper  
1 oz Mustard

### Method

- Cut the tomato
- Peel, core and cut the apple into small pieces
- Place in a large pan (or two pans to allow room for the ingredients to expand) bring to the boil and keep it at boiling point for one hour.
- Once cool place in air tight jars to store

Mrs L. A. Middlemiss

Email : [magazine@washburnwharfemidbenefice.org.uk](mailto:magazine@washburnwharfemidbenefice.org.uk)

## Community Notice Board



### Denton Flower and Cleaning Rota for August & September

4<sup>th</sup> August Karen Boothman  
11<sup>th</sup> and 18<sup>th</sup> August Sue Wood  
25<sup>th</sup> August and 1<sup>st</sup> September Julie Crowther  
8<sup>th</sup> and 15<sup>th</sup> September Hilary Crawford

### Weston Flower and Cleaning Rota for August & September

4<sup>th</sup> August Sally Stanley  
11<sup>th</sup> & 18<sup>th</sup> August Mrs H Pullan  
25<sup>th</sup> August & 1<sup>st</sup> September Stephen & Marlene Turnbull  
8<sup>th</sup> & 15<sup>th</sup> September Mr & Mrs Senior  
22<sup>nd</sup> & 29<sup>th</sup> September Mrs J Cowgill



### Fewston Parochial Hall Bank Holiday Charity teas



Teas, lunches and homemade cakes  
10.30 am to 4.00pm  
Saturday 24<sup>th</sup> Sunday 25<sup>th</sup> and  
Monday 26<sup>th</sup> August 2024.

Saturday and Sunday proceeds shared between  
Preschool, children's charity and Send  
Bank holiday Monday Beckwithshaw church.

### Askwith Ladies Social

The Penny Bun (formerly the Askwith Arms) has re-opened. The social evening will be on the 2<sup>nd</sup> Thursday of the month, the next meeting is the 8<sup>th</sup> August at 7pm

Contact Anne for more information - Tel: 07713884328  
Email: [laeatham@gmail.com](mailto:laeatham@gmail.com)

Email : [magazine@washburnwharfemidbenefice.org.uk](mailto:magazine@washburnwharfemidbenefice.org.uk)

## Nidd Art Trail

Saint Andrews Church, Blubberhouses LS21 2NU

17<sup>th</sup> and 18<sup>th</sup> August

24<sup>th</sup>, 25<sup>th</sup>, 26<sup>th</sup> August (Bank holiday weekend)

11.00 to 4.00 pm

**HOME-MADE CAKES AND REFRESHMENTS**

Free Entry

A variety of art, photography, textiles and  
woodwork by local artists

ENJOY!



## Book Shop

(or until all the book and a few quality items are all sold)

In aid of **Cure Parkinson's**

A wide variety of second hand books and magazines in  
good condition available both none fiction and fiction.

Most books are £1 unless priced otherwise.  
The shop is always open with an honesty box  
or gift aid envelope available.

Location: Redshaw Hall, Hall Lane/West End Lane West End near  
Thruscross Reservoir. Please email Anna Bowman on  
[magazine@washburnmidwharfebenefice.org.uk](mailto:magazine@washburnmidwharfebenefice.org.uk) if you would like directions or more  
information on the range of books available.



Please open the gate and turn in the front yard. The  
shop is in the porch is located through the double front  
doors.



Email : [magazine@washburnmidwharfebenefice.org.uk](mailto:magazine@washburnmidwharfebenefice.org.uk)

adults). The typical call is a clear and persistent three note coo-COO-coo, plus a harsh loud screeching call lasting about two seconds, just before landing. Their cooing in early spring is sometimes mistaken for that of early-arriving cuckoos. Being bigger than Blackbirds they are quite conspicuous, meaning that they are popular with predators, often being taken by cats and Sparrowhawks.

As an aside, they have very dusty feathers leading to fantastically detailed prints when they fly into a window. These often show every detail

of the individual feathers, the beak and even the eyelids, and are best viewed against a dark surface, and can easily be photographed. If not cleaned off the window they can last for several months, as the dust is oily and quite sticky.

If you find the lives of our garden birds interesting, and would like to join in and count the feathered occupants of your garden, please visit the BTO Garden BirdWatch website ([www.bto.org/gbw](http://www.bto.org/gbw)).

**Titles:** Collared Dove  
**Photograph credit:** Mike Grey



Email : [magazine@washburnmidwharfebenefice.org.uk](mailto:magazine@washburnmidwharfebenefice.org.uk)



## The Collared Dove

Drab, boring, ubiquitous. These are words that have been used to describe the Collared Dove, which has a unique history of natural colonisation from India across Europe to the UK. Ubiquitous it no longer is though, as a 30% drop in sightings in BTO's Garden Birdwatch demonstrates, and although one of our commoner birds, I've not seen one in my garden for 4 or 5 years.

Collared Doves first bred in Cromer in Norfolk in 1955 having spread through Turkey and the Middle East. They originated in subtropical Asia, and by 1838 were reported in Bulgaria, then across Europe to the Balkans between 1900–1920, and northwest to Germany by 1945.

Their spread across the British Isles was very rapid; following that first report in 1955 they were found breeding in Kent and Lincolnshire in 1957, also being seen as far north as Scotland. By 1959 Ireland was colonised, and in 1970 there were probably 25,000 pairs. The BTO Common Birds Census revealed a five-fold increase in their population between 1972 and 1996.

There is little evidence available relating to the drivers of their spread, though climate change was possibly involved, but they seem to have filled an empty niche by exploiting the intermittent seed resources available both in gardens and elsewhere.

Following their original increase in numbers, a decline in Collared Dove populations was noted from 2005 onwards, and likely linked to the

emergence and spread of trichomonosis, to which they are vulnerable. They are not migratory but are strongly dispersive, and over the last century, have been one of the great colonisers of the bird world, travelling far beyond their native range to colonise colder countries, becoming a permanent resident in several.

Collared Doves typically breed close to human habitation where food resources are abundant and there are trees for nesting. Given favourable weather conditions they nest throughout the year, and despite laying only two eggs each time, their multiple nesting attempts are one reason why they have been so successful. They are monogamous and share parental duties when caring for their young. The male's mating display is a ritual flight, which, as with many other pigeons, consists of a rapid, near-vertical climb followed by a long circular glide downward, with wings held below the body in an inverted "V" shape. At all other times, flight is typically direct using fast, clipped wing beats without gliding.

Collared Doves are regular visitors to bird tables, and large populations are found around farms with grain stores, or where livestock are fed. They are gregarious and form sizeable winter flocks where there are food supplies, typically grain, seeds, shoots and insects. Flocks usually number between ten and fifty, but up to ten thousand have been recorded.

The Collared Dove is smaller and more delicate than a Woodpigeon. It is creamy grey-buff with a black half collar on the back of its neck (in

Email : [magazine@washburnwharfemidbenefice.org.uk](mailto:magazine@washburnwharfemidbenefice.org.uk)

## LEATHLEY ??? PUB QUIZ NIGHT. ???

**FRIDAY October 18th 2024 7.00pm**  
**Tickets £12 pp includes supper**

**Bar, prizes and raffle**  
**At Leathley Village Hall**  
**Proceeds to St Oswalds Church Leathley**

**For tickets contact**  
**Sue**

**07812071636 or**  
**[suejwaddington@gmail.com](mailto:suejwaddington@gmail.com)**

## Weston, Denton and Askwith Some dates for your diary!

**Heritage Open Day, Saturday 14<sup>th</sup> September 2024**

Weston and Denton churches will be open and there will be teas at the Tithe Barn at Weston Hall. Watch this space for further details or visit the Heritage Open Days website

**Harvest Supper, Friday 27<sup>th</sup> September 2024**

Annual Harvest Supper at Askwith Village Hall.  
Further information and tickets later.  
Contact 07986 454 433

Email : [magazine@washburnwharfemidbenefice.org.uk](mailto:magazine@washburnwharfemidbenefice.org.uk)

All Saints' Church Farnley  
invites you to join us for

## FAMILY SERVICES

To be held at 9.30am

on

11<sup>th</sup> August



SONGS FUN BIBLE STORY  
Refreshments after the service

ALL WELCOME

For more details please contact Rev'd T McLaughlin  
[rev.McLaughlinT@outlook.com](mailto:rev.McLaughlinT@outlook.com)

St. Michael and St Lawrence Church  
Fewston HG3 1SU



## OTLEY BRASS BAND



Saturday, 7 September 2024, 2.30 pm

Tickets £12.50 inc. tea & cake  
Under 17s free

Pat 01943 880284, [anderson@delvesridge.plus.com](mailto:anderson@delvesridge.plus.com), or  
Cheri 01943 465977

On line: Fewston & Blubberhouses Churches  
05-06-61, a/c 32359634 Ref: OBB+Surname

Proceeds for Fewston and Blubberhouses Churches

Email : [magazine@washburnwharfemidbenefice.org.uk](mailto:magazine@washburnwharfemidbenefice.org.uk)



## Washburn Heritage Centre

[www.washburnvalley.org](http://www.washburnvalley.org)

Follow us on Twitter and Facebook



The Tea Room at the Heritage Centre is open on **SATURDAYS** and **SUNDAYS** during the summer, from 11am until 4pm. We welcome **NEW VOLUNTEERS**. If you can spare a few hours at the weekend once a month we would love to see you in the Tea Room. It's a busy environment, warm and friendly, but you are rewarded with cake!

Our programme **Inspired by our landscape**, continues to explore the way painters, poets and novelists have interpreted our world, appreciating the buildings created across the centuries and studying the way in which the landscape has changed and adapted to meet our needs. There is something for everyone in this exciting programme. If you are interested in attending any of the events, please contact Jenny at the office on 01943 880794 or email [centre@washburnvalley.org](mailto:centre@washburnvalley.org)

Events in August as follows:

### Spanish supper - Wednesday 7<sup>th</sup>

August, 6.30pm – 9.30pm

Enjoy a holiday atmosphere without the inconvenience of flying to foreign lands as we travel in our imagination to the Costa del Sol. Taste some Mediterranean cuisine while enjoying the talents of James Archibald as he entertains us with his classical Spanish guitar. Cost £19.50 member, £24.50 non-member. Bar available.

**Inspiration or perspiration? My journey into writing,**

### Alan Reynolds

Tuesday 13<sup>th</sup> August, 7.30pm – 9.00pm

"Everyone has a book in them". Alan Reynolds agrees that everyone has a story inside them but constructing a 100,000 word novel is a different proposition. In his talk, Alan will describe how he took a real life event and turned it into an award-winning book. He has now published 16 novels, all thrillers in different genres, including a five part 'trilogy' inspired by Yorkshire settings. Light refreshments served. Cost £10 member, £12 non-member.

### The making of poetry: Offcumdens

Thursday 15<sup>th</sup> August 2.30pm – 4.00pm

Emma Storr and Bob Hamilton will explain how their book, which is featured in our temporary exhibition in the Centre, came about and will share words and photographs with us. We hope that you will bring your favourite poems and images of our lovely area. Tea and cake served. Cost £8 member, £10 non-member.

### Three Halls

Wednesday 21<sup>st</sup> August 9.30am – 2.00pm

This 5 mile walk across fields and along tracks will complement the talk in July on local architecture and pass several halls and buildings in the mid-Washburn Valley, including Swinsty, Folly, Scow Halls, and Nether Timble. Some stiles and maybe muddy. Lunch served back at the Heritage Centre. Cost £12 member, £15 non-member.

Email : [magazine@washburnwharfemidbenefice.org.uk](mailto:magazine@washburnwharfemidbenefice.org.uk)



## HERITAGE OPEN DAYS

Saturday, 7<sup>th</sup> and Sunday 8<sup>th</sup> September  
Saturday, 14<sup>th</sup> and Sunday 15<sup>th</sup> September

Fewston and Blubberhouses Churches join the national celebration of our heritage. Both churches will be open all days, light refreshments available, everyone welcome as always.

**Fewston Church, Saturday, 7<sup>th</sup> September. at 2.30 pm**  
**Otley Brass Band Concert, tickets £12.50**

**Blubberhouses Church,**  
**Sunday, 15<sup>th</sup> September at 3.00 pm**  
**Choral Evensong with QUATTUOR**

The countdown has begun....  
The time is ticking slowly but surely....  
Soon the corks will pop  
The music blare  
The catwalk beckon  
Models twirl  
Sashaying.  
Sassy and sensational...  
It's the Biennial Fashion show!

**Diary Date!**  
**17th September 7.30pm**  
**Norwood Social Hall**















## Do you love Singing?



### Would you like to join a Choir?

Too busy? But Perhaps you could spare just a few hours every few months? Why not think about joining the Washburn & Mid-Wharfe Benefice Choir, who love to get together, have fun and sing for Major festivals and celebrations like Harvest Festival, Christmas and Easter.

If you are interested and would like to join please contact Rev Teresa McLaughlin  
email: [rev.mclaughlint@outlook.com](mailto:rev.mclaughlint@outlook.com)

## GAZEBO AND YARDS OF BUNTING AVAILABLE TO HIRE FOR YOUR NEXT PARTY/ SUNNY GET-TOGETHER

Looking on the bright side there will be some summer weather ahead!

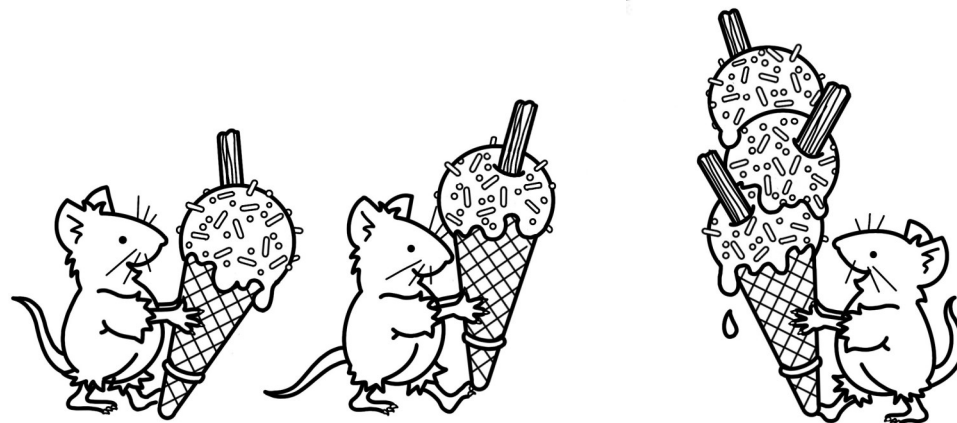
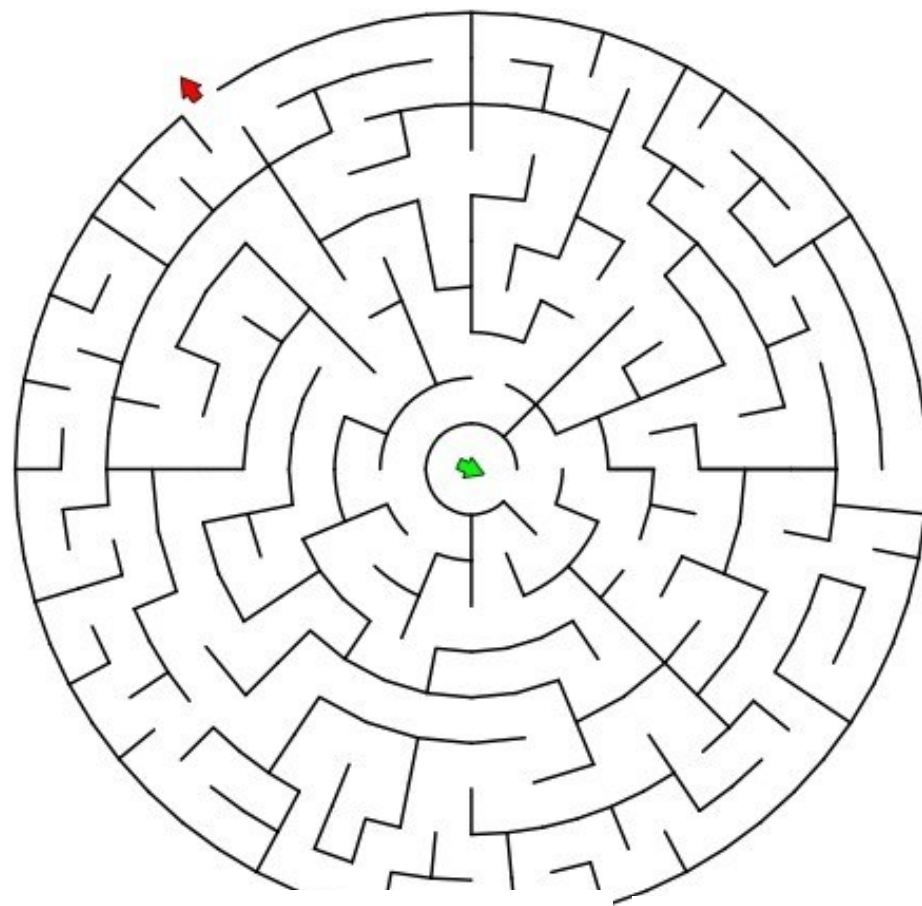
£75 a session

Our Gazebo accommodates two trestle tables, and has sides with windows.

Contact: Pat 01943 880284,  
[anderson@delvesridge.plus.com](mailto:anderson@delvesridge.plus.com).

Email : [magazine@washburnwharfidbenefice.org.uk](mailto:magazine@washburnwharfidbenefice.org.uk)

## Story, puzzles and colouring-in



Email : [magazine@washburnwharfidbenefice.org.uk](mailto:magazine@washburnwharfidbenefice.org.uk)



**Mouse Makes**

**"AND WHEN YOU PRAY,  
PRAY THEN LIKE THIS ..."**

Where does Jesus say  
to go to pray?  
*Matthew 6:6*





What does God know  
before you ask Him?  
*Matthew 6:8*

What can we ask God  
to deliver us from?  
*Matthew 6:13*

If you forgive others  
what will God do?  
*Matthew 6:14*



**D L O R D S P R A Y E R**  
**L F W R E A R T H K S O**  
**D A I L Y K E D A S K O**  
**E T L V T H Y E L H D M**  
**B H L A M E N L L O O I**  
**T E M P T A T I O N N H**  
**S R A R A V I V W O E E**  
**S K N A M E T E E U V A**  
**I C J Y V N E R D R I R**  
**N O U R N A V B R E A D**  
**S M E W I K I N G D O M**  
**J E S U S U L Y O U R J**  
**N E E D S F O R G I V E**

ROOM • PRAY • ASK • NEEDS • HEARD • JESUS  
 LORDS PRAYER • OUR • FATHER • HALLOWED • HONOURED  
 NAME • THY • KINGDOM • COME • YOUR • WILL • DONE  
 EARTH • HEAVEN • DAILY • BREAD • FORGIVE • DEBTS  
 SINS • TEMPTATION • DELIVER • EVIL • AMEN

Aug24©deborah noble • parishpump.co.uk

Email : [magazine@washburnwharfemidbenefice.org.uk](mailto:magazine@washburnwharfemidbenefice.org.uk)

## All in the month of August

It was:

300 years ago, on 25<sup>th</sup> August 1724 that George Stubbs was born. This British artist is best known for his paintings of horses.

250 years ago, on 1<sup>st</sup> August 1774 that oxygen was discovered by British chemist Joseph Priestley. He was the first scientist to publish his findings on the discovery.

125 years ago, on 13<sup>th</sup> August 1899 that Alfred Hitchcock was born. This British-born American film director, producer and screenwriter was known as the Master of Suspense. Known for his films *The 39 Steps*, *Dial M for Murder*, *Rear Window*, *Vertigo*, *Psycho*, *The Birds*, and many more.

100 years ago, on 15<sup>th</sup> August 1924 that Robert Bolt, the British screenwriter and playwright was born. Known for his screenplays for the films *Lawrence of Arabia*, *Doctor Zhivago*, and *A Man for All Seasons*.

80 years ago, on 1<sup>st</sup> August 1944 that 15-year-old Jewish diarist Anne Frank made the final entry in her diary while hiding from the Nazis in Amsterdam. On 4<sup>th</sup> August her hiding place was raided by Nazi police following a tip-off. She and her family were taken to Auschwitz concentration camp, and she was transferred to Belsen in October. She died in February 1945.

Also 80 years ago, on 25<sup>th</sup> August 1944 that Paris was liberated from the Nazis. The Germans had occupied the city for four years. General Charles de Gaulle (later President of France) entered the city in triumph.

75 years ago, on 24<sup>th</sup> August 1949 that the North Atlantic Treaty came into effect, establishing NATO.

65 years ago, on 7<sup>th</sup> August 1959 that the

USA launched the Explorer 6 satellite, which sent back the first images of the Earth from space.

60 years ago, on 12<sup>th</sup> August 1964 that Ian Fleming, British novelist and creator of the character James Bond, died.

40 years ago, on 1<sup>st</sup> August 1984 that the preserved body of Lindow Man (informally known as 'Pete Marsh' was found in a peat bog in Cheshire. It was nearly 2,000 years old. He had suffered a violent death, which may have been part of a ritual.

Also 40 years ago, on 5<sup>th</sup> August 1984 that Richard Burton, Welsh stage and film actor (*Cleopatra* and *Who's Afraid of Virginia Woolf?*, and many more, died.

30 years ago, on 28<sup>th</sup> August 1994 that Sunday trading was legalised in England and Wales.

Also 30 years ago, on 31<sup>st</sup> August 1994 that the IRA agreed to a complete ceasefire after 25 years.

25 years ago, on 16<sup>th</sup> August 1999 that Vladimir Putin became Prime Minister of Russia. He became President in May 2000.

20 years ago, on 11<sup>th</sup> August 2004 that Britain issued its first license for cloning human embryos, after becoming the first country in the world to allow therapeutic cloning in 2001. Researchers hoped to produce stem cells to treat diseases. They created their first cloned human embryo in May 2005.

10 years ago, on 24<sup>th</sup> August 2014 that Richard Attenborough, Lord Attenborough, died. This British film actor and director was best known for his roles in *Brighton Rock*, *The Great Escape*, *Jurassic Park*, and *Miracle on 34<sup>th</sup> Street*. He directed films including *Oh! What A Lovely War!*, *A Bridge too Far*, *Cry Freedom* and *Gandhi*.

Email : [magazine@washburnwharfemidbenefice.org.uk](mailto:magazine@washburnwharfemidbenefice.org.uk)



# Bible Bite

A short story from the Bible

It can be read in the Bible in  
Mk 4:35-41, Mt 8:23-27, Lk 8:22-25

Jesus had spent the day teaching  
big crowds by Lake Galilee, and when  
evening came he told his disciples..

We'll sail over to the east  
side of the lake



Suddenly a massive  
storm blew up



Even the experienced  
sailors panicked



But Jesus was fast asleep  
at the back of the boat



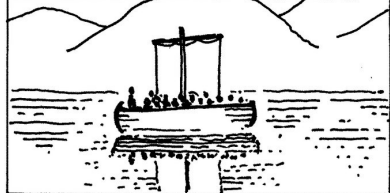
Lord, save us!  
Master we're going to drown!

Teacher, don't you care  
we're going to drown?

Be quiet!



Immediately the wind stopped  
and everything was calm.



Why were you afraid?  
Don't you trust me?



Now the disciples were even more afraid.



Who is he? Even  
the wind and sea  
obey him!

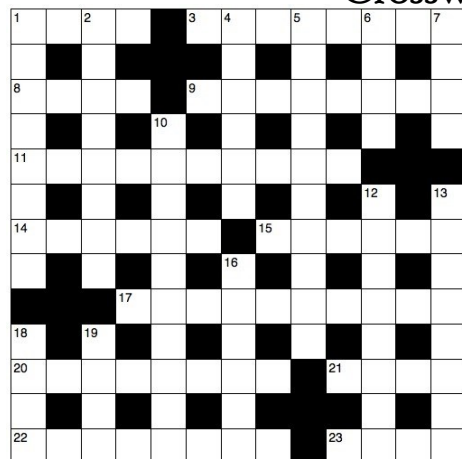
Only God has  
power like that!



Email : [magazine@washburnwharfemidbenefice.org.uk](mailto:magazine@washburnwharfemidbenefice.org.uk)

Email : [magazine@washburnwharfemidbenefice.org.uk](mailto:magazine@washburnwharfemidbenefice.org.uk)

## Crossword Puzzle



### Across

1 and 3 Two of the disciples who witnessed the transfiguration of Jesus (Luke 9:28) (4,3,5)

3. See 1 Across

8. 'Let us draw — to God with a sincere heart in full assurance of faith' (Hebrews 10:22) (4)

9. O Simon is (anagram.) (8)

11. Form of government under the direct rule of God or his agents (10)

14. How Jesus found his disciples when he returned to them after praying in Gethsemane (Luke 22:45) (6)

15. In The Pilgrim's Progress, the name of the meadow into which Christian strayed, which led to Doubting Castle (2-4)

17. Glad sin rat (anagram.) (10)

20. Spinal column (Leviticus 3:9) (8)

21. Valley of the Balsam Tree with a reputation of being a waterless place (Psalm 84:6) (4)

22. 'The oracle of Balaam son of Beor, the oracle of one — — sees clearly' (Numbers 24:3) (5,3)

23. Adam and Eve's third son (Genesis 4:25) (4)

### Down

1. David's great friend (1 Samuel 20:17) (8)

2. 'The Lord... will bring me safely to his — kingdom' (2 Timothy 4:18) (8)

4. 'I, Daniel, mourned for three weeks. I ate no choice food; — — or wine touched my lips' (Daniel 10:3) (2,4)

5. Seeking to vindicate (Job 32:2) (10)

6. Female servant (Isaiah 24:2) (4)

7. 'For Christ died for — once for all' (1 Peter 3:18) (4)

10. 'Offering spiritual sacrifices — to God through Jesus Christ' (1 Peter 2:5) (10)

12. Jesus said that some people had renounced this 'because of the kingdom of heaven' (Matthew 19:12) (8)

13. One of the three men thrown into the furnace for refusing to worship Nebuchadnezzar's golden image (Daniel 3:20) (8)

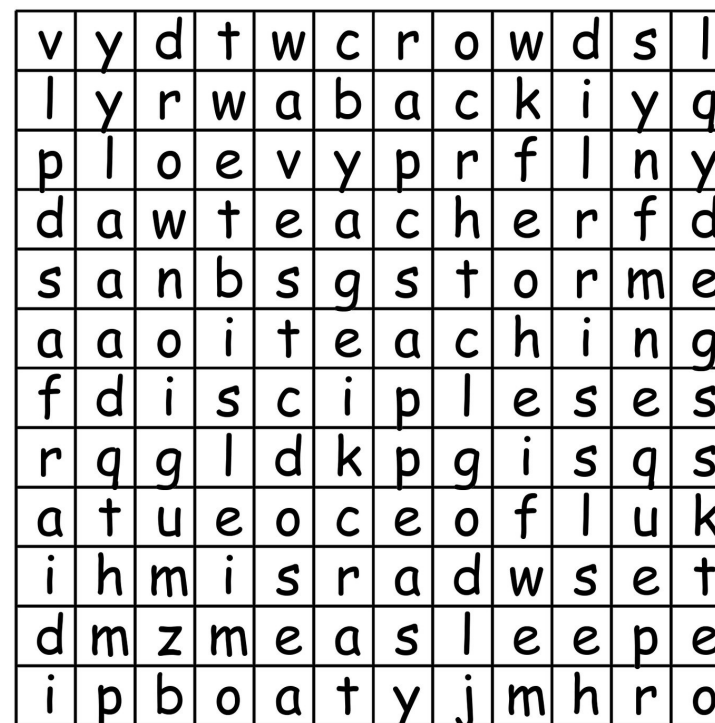
16. 'You have — of good things laid up for many years. Take life easy; eat, drink and be merry' (Luke 12:19) (6)

18. 'There before me was a white horse! Its rider held — —, and he was given a crown' (Revelation 6:2) (1,3)

19. Equipment to Charity Hospitals Overseas (1,1,1,1)

## Word Search

## Calming the storm



Sea  
Jesus  
asleep  
crowds  
calm  
wind  
drown  
Teaching  
boat  
immediately  
Galilee  
storm  
care  
disciples  
obey  
Teacher  
panicked  
power  
back  
God  
waves  
afraid  
sailors  
quiet



## Sudoku

